



## RESERVE REPORT

February 2019

### Introduction

The reporting period is for February 2019, traditionally a month of very low occupation in Camp. This year was no different, reflected by very few recordings in the Reception sightings register and an observation that on many occasions the Reception car park was void of vehicles! The radio was exceptionally quiet when monitoring for after hour duties.

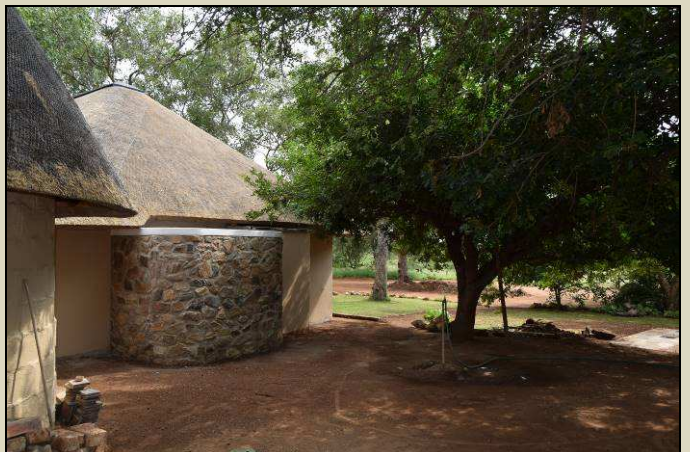
**Sibon Phase 2** progressed well through February, and although the task of capturing the true progress on camera is never easy, the images shared below are taken at the time of writing. It really is taking shape and I believe the outcome will enhance user experience exponentially. Not wishing to tempt a commentator's curse, there is the slightest hint the project may be completed a few days ahead of schedule.



*Preparing for paving to match the patio floor level so it is wheelchair friendly*



*Access pathway replaced with paving*



*Outside shower off Bedroom 1*



*Two guest bathrooms off gazebo/patio area*



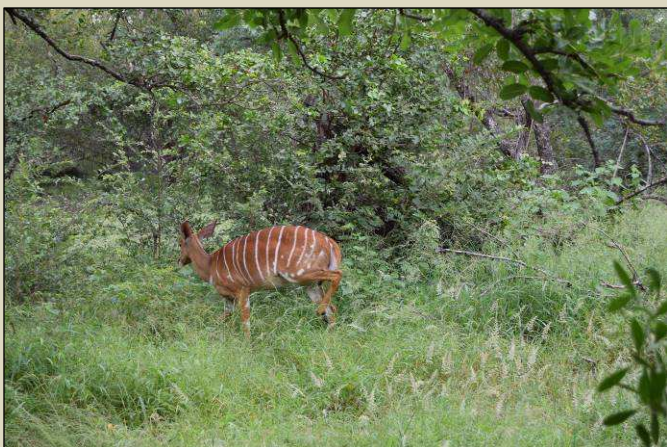
*New kitchen, scullery and secure pantry area*

**The Nhlalalumi River** flowed after fantastic rains in 2019, in that both January and February exceeded their long-term average figures. The rains have been effective, meaning that the soaking rains have dominated the high-volume type run-off rains. This has stimulated high growth vigour in the grass sward, producing a high level of grass biomass. Year on year the veld condition is much improved compared to early 2018.

Good rains in the Nhlalalumi catchment to the south of Ingwelala resulted in the river flowing strongly in mid and late February. This is always a welcome sight and a reminder that nature intended these non-perennial rivers to function in an open and natural way. Any impoundments on these river systems should be minimalistic to avoid long-term negative impact on the riparian areas.



*The Nhlalalumi River flowing strongly late February and early March 2019*



*Adult female nyala (Tragelaphus angasii)*

This image to the left is representative of current veld conditions following above average rains for two consecutive months. General animal condition in the herbivores is excellent. Body weight has increased significantly in a short period of time. Coats are shiny and the appearances spell healthy!

This is a far cry from five months ago when there was hardly a blade of grass to be seen away from the riverine areas.

## Frogs

Where there is water there are frogs. Members in Bungalow # 197 brought to my attention these tiny Marbled Snout-burrower frogs (*Hemissus marmoratus*) occasionally found in the swimming pool. (Frog pictures courtesy Chris Thorpe)



*Marbled snout-burrower frog*



*R1 coin for size comparison*

*Hemissus marmoratus* has two common names, Marbled Snout-burrower and Mottled Shovel-nosed Frog. It is wide spread in central and southern Africa and can survive in a wide range of habitats from subtropical to dry savanna.

The front toes are without webs, their bodies are very rounded and somewhat flattened, but in the pictures above the frogs have “inflated” themselves to look larger, a defence mechanism. The pupils are vertical. The snout has a hard, pointed ending, giving rise to the description of its common name. There is a short channel type groove on top of the head, found between the eyes.

The shovel nose is used for digging as these frogs prefer to be underground. It is for this reason they are not often seen. Only when the rains come do they emerge to feed and mate. Eggs are laid underground, mating also takes place underground. Females stay underground after mating to protect their eggs.

Diet consists mostly of insects.

Threats to these frogs are loss of habitat through harvesting of plants and trees in their habitat and the introduction on non-endemic fish which feed on the frogs.

## Flowers



*Yellow Mouse-whiskers (Cleome angustifolia)*

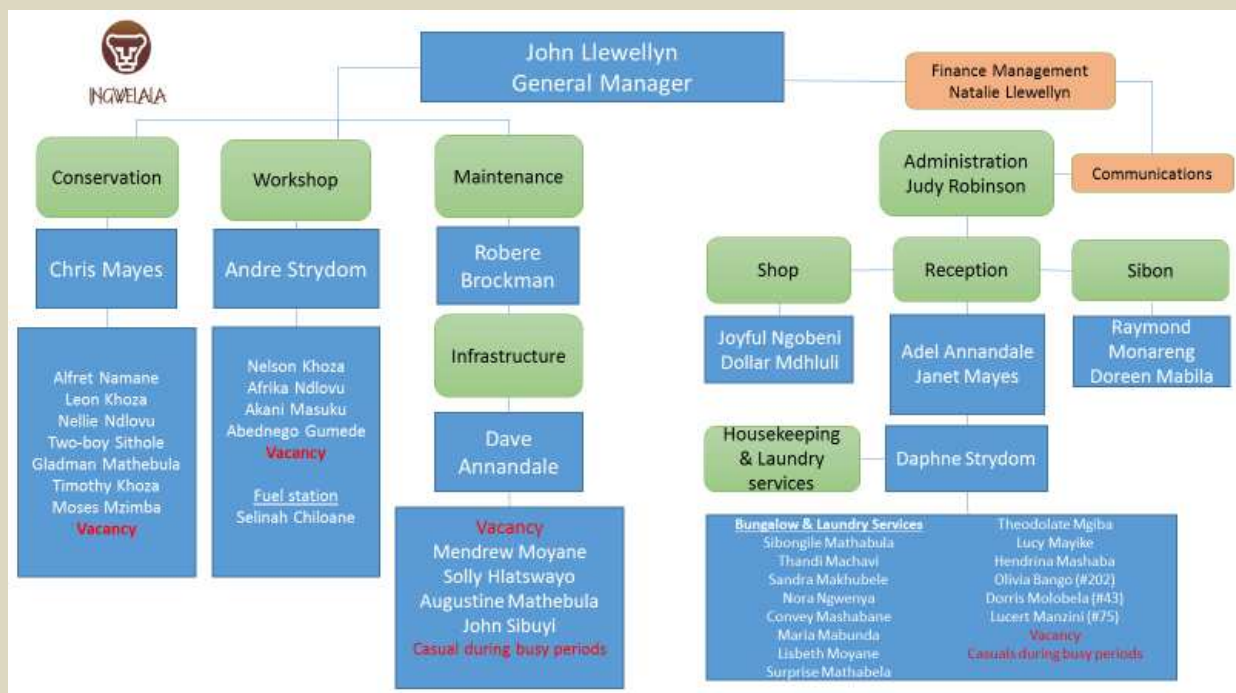
Yellow Mouse-whiskers (*Cleome angustifolia*) have flowered in abundance this summer. No two seasons are the same, and it is interesting to observe and compare over the years the conditions that favour different species of plants.

This is the year of the Yellow Mouse-whisker plant, that under favourable conditions is widespread over southern Africa. It is very noticeable in the veld, especially in Camp, where it enjoys growing in previously disturbed areas. These may be areas previously disturbed from build sites, road verges and paths.

Yellow-Mouse whisper is a herb with compound leaves and has the most delicate, beautiful yellow flower. The leaves are compound and the fruit are slender pod-like structures. They can grow up to 750 mm in height.

*Facts researched on the Internet: Words by John Llewellyn.*

**Organisational Staff Chart**

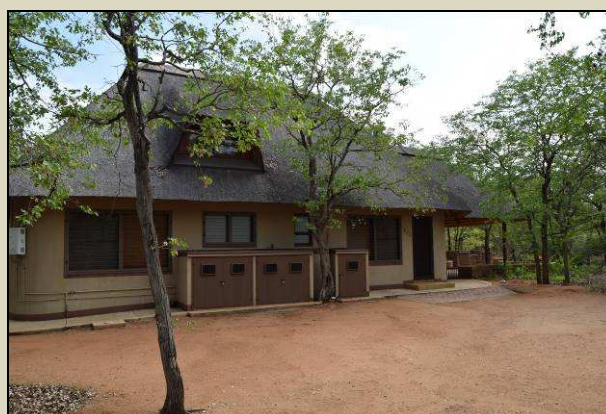


**Staff Movement**

Nil.

**Bungalows for sale**

Bungalow # 100, a share sale of 77% of 7 shares, with sole occupation rights to the Bungalow for R5.250 Million.

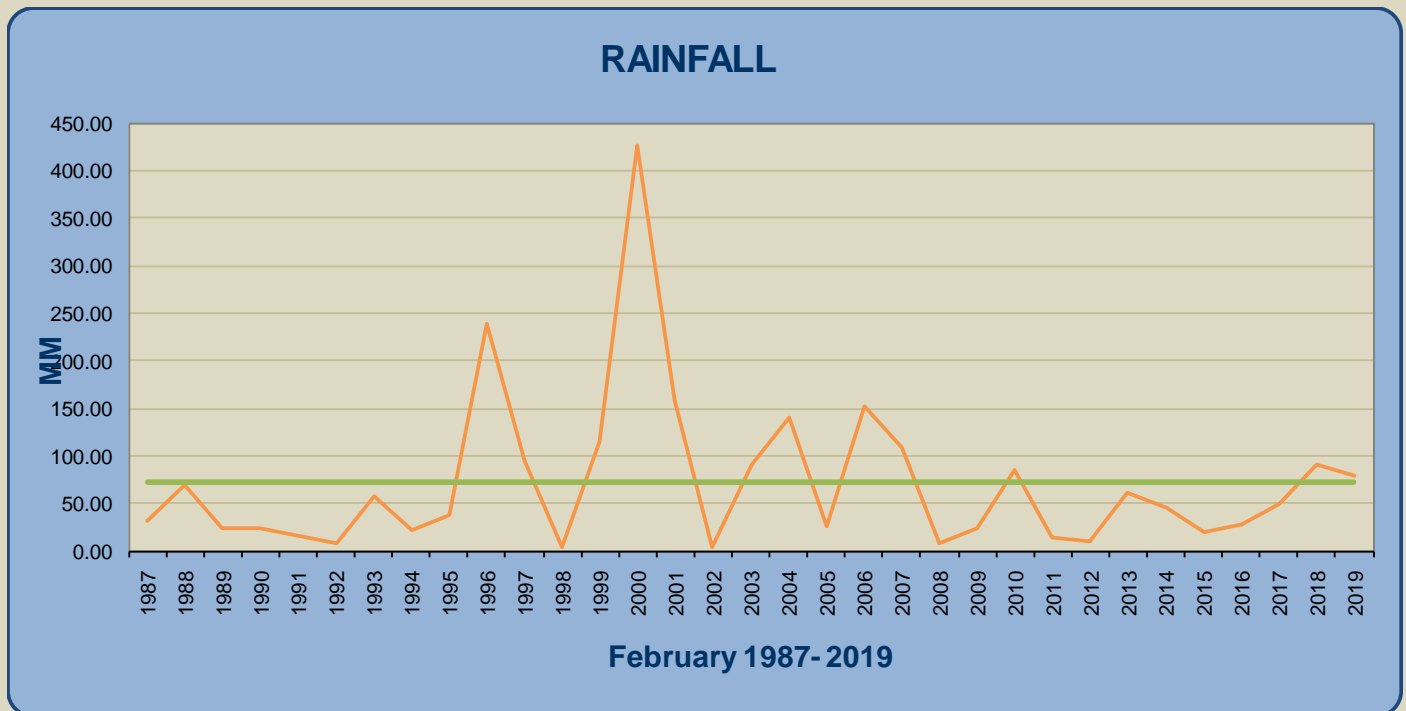


*Bungalow # 100*

### Climate and rainfall (summary for Ingwelala)

Rainfall: 78.9mm  
Minimum temperature: 19 degrees Celsius.  
Maximum temperature: 38 degrees Celsius.

The following graph summarises total rainfall recorded at Ingwelala for the month of February over the past 33 years.



(Note: February 2019: 78.9 mm rainfall is above the monthly average of 71.8mm)

### Conservation

#### **Alien Plant Eradication**

Nil.

#### **Veld Rehabilitation**

Feedback from Theresa MacDonald regarding the new product for folio spray has been very positive. A follow up spray on the rehabilitated site on Buffels will commence towards end – March.

#### **Roads and Tracks**

The road work continued throughout the month. The main focus was on repairs to the rain affected areas as well as the dragging of tyres on all properties to smoothen out the small ruts that develop over time. All properties were completed in their entirety.

#### **Airstrip**

Regular visits to the airstrip done and recorded in the inspection book.

Some weeding was done on the airstrip surface, as well as drainage improved on the Southern sections of the strip.

#### **Fencing**

We have commenced with replacing the steel wires and Y-standards on the Camp fence.

## **Hides, Bomas & Picnic Sites**

Significant animal damage to the one side of the Bird Hide screen (walkway). Judging from spoor the cause was most likely buffalo been spooked by lions, crashing into the screen. A temporary repair was made in order to make the Hide accessible for use. Timber is being sourced.

The solar pump that services Buffelsbed Hide suffered an electrical short.

## **Game & Bird Sightings**

The low camp occupancy during February was certainly reflected in the Reception sightings register with very few entries! Other than the Big Five sightings and three bird species recorded, a crocodile at Old Farmhouse was the only animal that earned special mention. An extremely quiet month, so there is not a whole lot of information to share.

The bird species recorded were Ground Hornbill, African golden Oriole and African Cuckoo. The flow of the Nhlalalumi River attracted Saddle-billed Stork, Giant and Pied Kingfisher, Hammerkop and Grey Heron to the water pool immediately downstream of the causeway. It is always interesting to watch the fish trying to migrate upstream when they reach the causeway. The recent structural repairs to the causeway have certainly helped their cause.

Big Five sightings represented a full house with plenty of elephant sightings, especially breeding herds. Buffalo sightings increased month on month so good to see the buffalo are returning to range on Ingwelala. Lion sightings were sparse and vocally very few calls heard at night. Leopard sightings were also less than expected, but with the long grass and lush bush, the leopards are difficult to spot.

There was a radio report of wild dogs on an impala kill on Argyle, the kill promptly robbed by hyenas!

On my own travels around the Reserve I recall general game sightings of giraffe, zebra, blue wildebeest, impala, klipspringer (with a juvenile), nyala, kudu, hippo, warthog and steenbok.



*Nyalas showing good body condition*

## **Road Kills**

Nil.

**General Fire Risk Management**

Fire-fighting equipment is checked on a weekly basis.

X 1 tractor available to assist with fire-fighting (x2 water drawn carts).

X 1 “Bakkie-Sakkie” serviceable and responsive on a “first call” basis.

X 20 fire beaters and x4 knap-sack sprays in good working order.

X 2 “frog pumps” fully operational.

**Umbabat**

Nil.

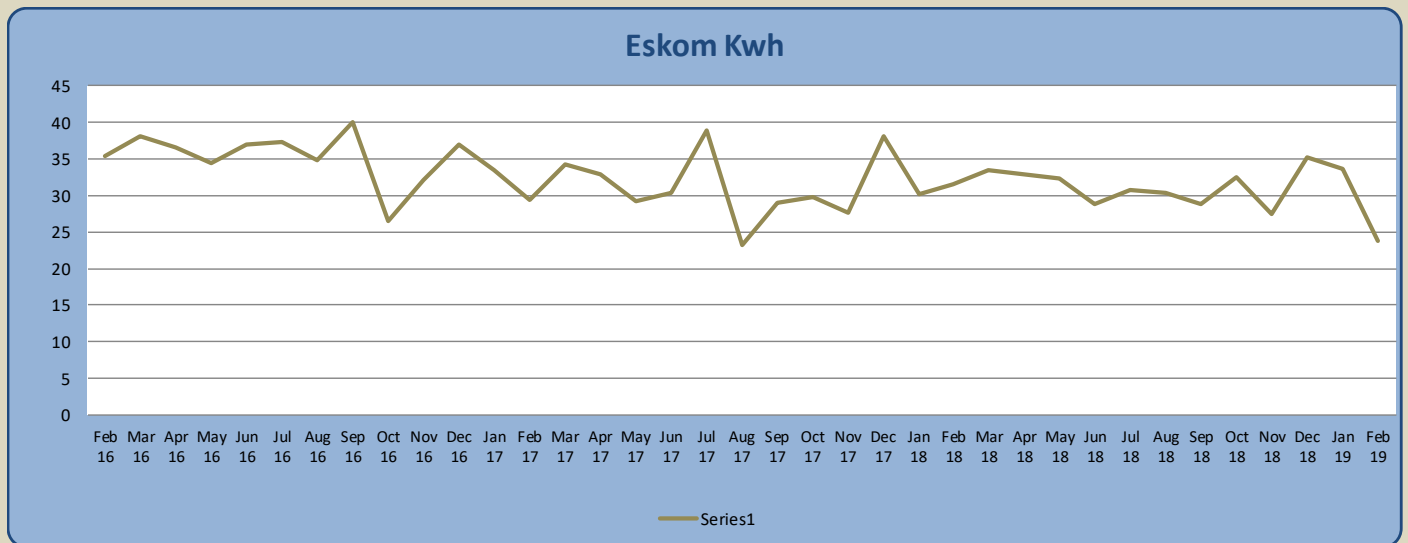
**Vehicles and Workshop**

WORKSHOP	FEB 19	JAN 19	DEC 18	NOV 18	OCT 18	SEPT 18	AUG 18	JULY 18	JUN 18	MAY 18	APR 18	MAR 18
JOB CARDS OPENED	39	51	57	33	52	65	67	62	68	51	61	60
JOB CARDS CLOSED	45	45	46	30	56	57	66	36	89	72	49	46
GENERATOR HOURS	16.2	0.4	85.2	37.2	31.8	1.9	0.5	17	0	7.1	0	1.4
DIESEL TANK (L)	550	400	420	260	780	730	750	750	900	900	970	970

The general fleet and static plant maintenance are 100% compliant with the servicing schedule.

**Eskom Usage**

The following graph shows the monthly Eskom Usage (Kwh) for Ingwelala.



### Building projects in progress

Bung No	Name	Work requested	Approval	Builder	% Complete
58	Wayne Bartholomew	New built-in-braai and storage cupboard	May 2018	Owner builder	0 %
62	Ian VD Merwe	Solar upgrade	January 2019	Bushmasters	0%
83	Sheila Bluhm	Demolish & Rebuild	October 2018	Dukes Construction	20%
120	Barnes Senekal	Solar upgrade	January 2019	Not selected	0%
103/4	Dieter Ebeling	Demolish and Rebuild	December 2018	Dukes Construction	15%
163	Chris Pronk	Solar upgrade	January 2019	Not selected	0%
206	Wolfgang Maier	Rethatch & Internal changes	October 2018	Dukes Construction	35%

### Reception Statistics

GATE STATISTICS	FEB 19	JAN 19	DEC 18	NOV 18	OCT 18	SEP 18	AUG 18	JULY 18	JUN 18	MAY 18	APR 18	MAR 18
VEHICLES	139	152	454	209	256	273	321	273	304	171	311	340
MEMBERS GUESTS	417	380	1317	536	742	751	1002	793	907	453	988	956
UNACCOMP GUESTS	0	0	0	2	29	4	0	0	8	2	0	0
UNITS OCCUPIED	95	149	201	110	134	141	168	170	160	135	233	173
AIRBORNE VISITORS	4	10	10	6	18	9	8	5	3	8	4	3

COTTAGE NIGHTS	FEB 19	JAN 19	DEC 18	NOV 18	OCT 18	SEPT 18	AUG 18	JULY 18	JUN 18	MAY 18	APR 18	MAR 18
HORNBILL	9	10	11	13	6	17	4	13	21	5	22	17
FRANCOLIN	6	10	16	4	10	14	8	14	26	3	15	12
GUINEAFOWL	4	15	17	2	0	7	15	21	19	3	15	16

### General:

1. Please Save the Date for the next Members Information and Feedback Evening.

27 March 2019, commencing 18H30 at the Bryanston Country Club.

Guest speakers are Angela Young from Bushveld Experience Skills and Training and Mathew George from firstEquity. The former presentation will cover discussion on grasses and veld management and the latter on emergency procedures for Members and their guests when visiting Ingwelala.

Thank you for your continued support.

John Llewellyn  
Reserve Manager  
Ingwelala Share Block (Pty) Ltd.