



RESERVE REPORT

January 2017

Introduction

Abraham's bird hide safety tips.

Here are a few tips shared with you for personal safety when entering Hides and Bomas.

Bird hides are open structures out in the bush. Gates and entryways will keep big game out, but smaller creatures may be able to get in.

- Ask an adult to enter the hide before children rush in.
- Scan every corner (including the roof) before relaxing.
- Constantly be aware of your surrounds.
- Give snakes their space – you are the intruder after all.
- When encountering a snake, leave a note on the door or bench warning new visitors – not everyone is alert and bush-wise.

Nasty Experience.

Members recently described to me a scary experience they had at their bungalow, an incident that could easily have ended in a disaster.

On settling down for dinner outside on the patio, someone left the table to fetch an item from the fridge. When entering the kitchen area, the person was met by huge flames leaping up the back of the gas fridge. Sounding the alarm everyone rushed inside to understand the situation and assist. Soon it was discovered that the gas chest freezer in the pantry was doing the same thing, large flames drawing up the freezer chimney column, and already the curtains were alight.

The fire extinguisher was deployed to try and douse the flames while a person ran to the gas bottle bank to close the gas supply. By this time the individual gas supply valves at the fridge and freezer could be reached as the flames were now abating, and these were turned off.

Consider the consequences if there was nobody home at the time?

On investigating the cause of this incident, gas experts (Technicians) concluded that the gas regulator had failed, thereby no control of a regulated gas flow to the appliances, the increased gas supply "FUELED THE FIRE" so to speak, and in seconds, disaster struck.

Considering the natural elements at Ingwelala, the ambient temperatures, the erratic occupancy of bungalows, it is imperative we learn from this unfortunate experience, and therefore it is highly recommended you have your gas regulators checked routinely by a qualified gas Technician?

Introducing staff profiles

Several Members have requested that each month a different staff is elected to share their personal profile information.



This is Selinah Chiloane, who you will all recognize as the lady who assists you at the fuel forecourt with fuel, oils, spares from the stock room and any firewood/charcoal requirements.

Selinah was born on 20 February 1969 at Tintswalo Hospital in Acornhoek, Mpumalanga. Her father was a well-respected elder in the community and from an early age Selinah recalls her father instilling the value that should always strive to continuously improve your life skills through the discipline of learning. Acquiring knowledge is a key value in life. Selinah has two brothers and two sisters. Sadly, both her parents passed away some time ago.

Selinah has never married, has two sons, the oldest son is Respect, who has tertiary education in IT and Business Skills. The youngest son, Oketso, is a learner in Grade 4. Selinah supports herself and her two sons on her monthly income.

A cousin of Selinah introduced her to Ingwelala in 1996, when she left her employment at the well-known Jos Mac's, and initially Selinah was employed as a temporary staff in the Conservation Section, assisting with selective bush clearing (veld rehabilitation). In the same year, Selinah was offered the permanent position of Forecourt & Stock Attendant, where she still serves.

JL: What is your favourite thing about Ingwelala?

SC: I like the fact that it is non-commercial, a low crime area and that we get to see so many animals.

JL: WHAT is your favourite animal, and why?

SC: A lion, because I had never seen a lion until 1996 when I came to Ingwelala, and as we passed through the Control Gate there were four white lions near the road side. It was a very special moment for me.

JL: What vision do you have for Ingwelala and what special (future) thing would you like to see at Ingwelala?

SC: I would like to see our (staff) skills and knowledge improve in the work place, and for myself learn enough skills to one day work in Reception.

JL: What do you consider your best work achievement and contribution at Ingwelala?

SC: *I felt honoured to be selected as a Development Candidate, it gave me confidence and improved my leadership skills.*

JL: Do you have any relatives working at Ingwelala:

SC: *Africa Ndlovu, employed in the Workshop, is my brother.*

From the Board:

1. Special General Meeting (SGM).

Please note that there is a SGM scheduled as part of the next General Information Evening for 16 March 2017 to obtain Member approval for improving changes to the recently adopted MOI for the respective companies. Details will be published in the official notification that will follow timeously. In the interim, please diarise this important date in the life of Ingwelala as a 75% majority vote is required to carry approval.

18h00 registration for 18h30 start at Bryanston Country Club on 16 March 2017.

2. Staff “Moonlighting”

It has come to the Board’s attention that a disciplinary enquiry was recently instituted against a staff member who was considered “moonlighting” in the work place for personal financial gain.

This is an appeal to all Users to please carefully consider the requests you put to staff. It is understood that most requests are made with the intention of assisting staff welfare. Ingwelala is extremely fortunate to have a low turn-over of staff, and therefore as a community it is natural that personal relationships develop between Users and Staff over time.

However, in the Staff Code of Conduct, employees are not permitted to earn additional income without written consent from the Board. This is to ensure there is no conflict of interest between Employer and Employee in the work place. Therefore, where services are offered to Users, please follow the company Policies and Procedures, through opening a Job Card in Reception and ordering the necessary service(s).

For example, you wish to have something attended to on your game viewer, and this repair or maintenance item is a service offered by the Workshop, it is not correct to approach a Workshop employee, and arrange with him/her to carry out the work privately for reward, and not complete a Job Card for the Workshop itself to carry out the work.

Please consider your actions carefully to avoid your actions being the potential cause for an employee to face dismissal because you place the employee in breach of company Policies and Procedures.

Should you be unsure if there is a potential conflict of interest, please consult with a Supervisor of the employee before proceeding, or consult the Reserve Manager directly to obtain clarity.

Thank you for your understanding and cooperation going forward.

All employees have been advised accordingly.

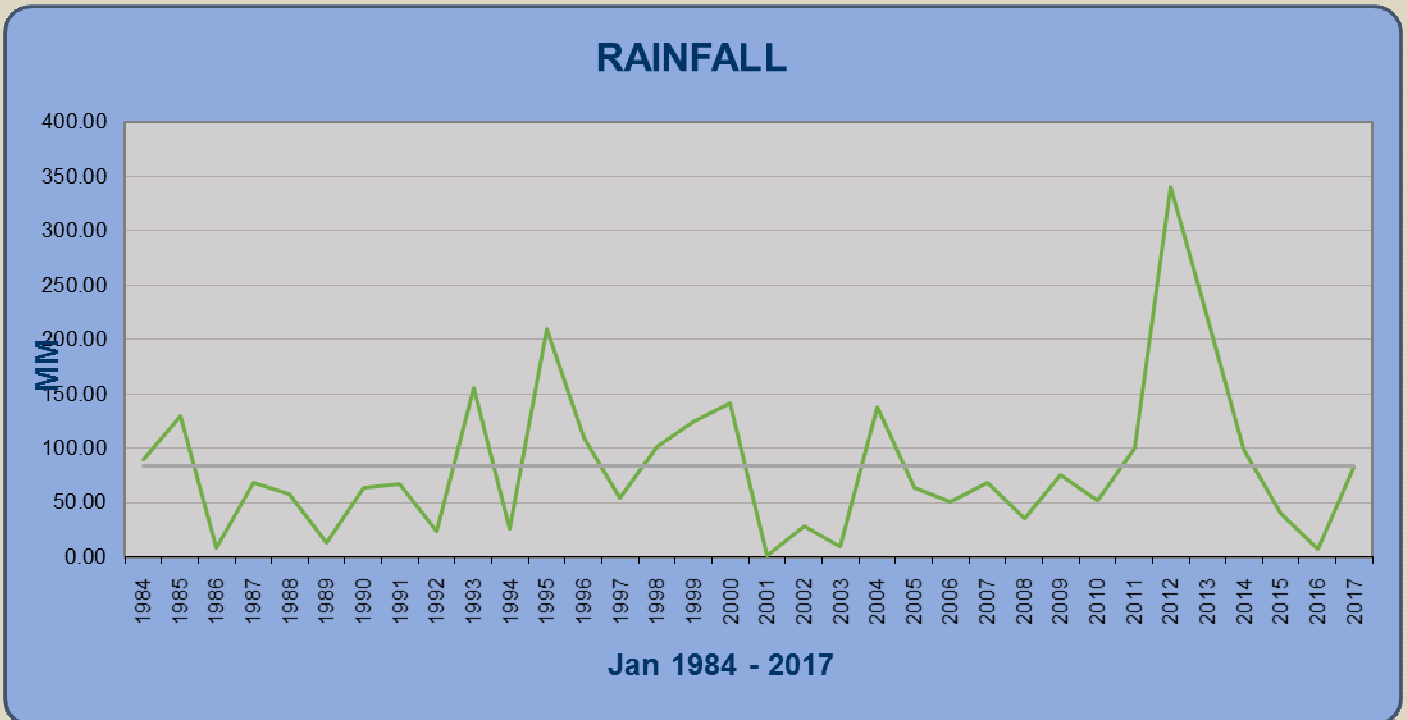
3. Upcoming CAPEX Projects.

Subject to effective quotes and a review of accommodation type, the Board approved capital expenditure for Phase 2 (x 2 accommodation units) in Vuka Ingwe and x1 “dormitory” style accommodation unit in Vuka Ingwe (to sleep 8 persons). The latter is for fixed term contract staff.

Climate and rainfall (summary)

Rainfall: 83.5 mm: Season Total = 296.4mm.
Minimum temperature: 17 degrees Celsius.
Maximum temperature: 37 degrees Celsius.

The following graph summarises total rainfall recorded at Ingwelala for the month of January over the past 33 years.



(Note: January 2017: 83.50 mm rainfall is very close to the January monthly average of 83.90 mm!)

Staff complement

Reserve Manager (1)
Conservation Manager and 2iC (1)
Camp and Systems Manageress (1)
Front Desk Manageress (1)
Accounts Manageress (1)
Workshop Manager (1)
Maintenance Manager (1)
Reception and Housekeeping (1)
Field Assistants (6)
Grounds staff (2)
Domestics (14)
Maintenance Assistants (5)
Workshop Assistants (4)
Petrol and Stores Attendant (1)
Shop assistants (2)
Sibon (2)

Staff Movement

We wish Wilson Ngomane a healthy and relaxing retirement. Wilson joined Ingwelala on 01 October 1998 and worked an assistant in the Workshop. Thank you, Wilson, for your 18 years of loyal service and outstanding contribution in the work place.

Bungalows for sale

Bungalow # 38, a 50% share of six shares for R 1.50 million.

Bungalow # 18, a full (100%) share of seven shares for R4.90 million.

Conservation

Alien plant eradication

Conservation staff treated 30 Opuntia (prickly pear) with herbicide along the Nhlalalumi River on Buffelsbed.

Thank you to Members who assist Mark Shaw by recording in the sightings register where prickly pear is found on the Reserve.

Veld Rehabilitation

Two hectares of selective bush thinning (Grewia spp) cleared along Eastern River Road on Buffelsbed.

Two hectares of follow up treatment on Grewia coppice carried out at the junction of Route 1 and River Road on Argyle.

Erosion Control

Nil.

Roads and Tracks

All Camp roads were dragged with tractor and tyre a second time after more rain.

Airstrip

The airstrip surface is inspected on a weekly basis and the general condition recorded in a register.

Encroaching grasses at the apron entrance as well as the runway verges were slashed.

Light tyres were dragged over the southern end surface to level cross water run-off.

All airstrip users are reminded to complete (once off) an ***Ingwelala Airstrip Indemnity Form*** before landing. Indemnity forms are obtainable from reception@ingwelala.co.za Guest pilots must also complete the form before using the airstrip.

Fencing

All the fences are working within the APNR Protocol and Norms and Standards.

X 7 breaches to the Camp fence during the reporting period. Conservation Staff managed to entice the one bull elephant that was reluctant to leave camp on 30 January. Fences were temporarily removed at two of the river crossings for the elephant to exit.

Vuka Ingwe and the Camp fences were sprayed with a second dose of herbicide.

Bomas, Hides and Picnic Sites

These facilities are checked daily.

Moderate damage to the entrance gate and walkway (screen) at Bird Hide, caused by elephants.



Elephant damage at Bird Hide.

Game sightings

Game viewing was excellent for the reporting period. The bulk of the Big Five sightings were lions, leopards and breeding herds of elephants. There were several lion kills, with the lionesses seen often near Third Crossing on Buffelsbed, protecting their young cubs. The elephant cow that has a hole in her forehead appeared as usual this summer, when this herd extends its range from the KNP. The trend that the elephant breeding herds are more plentiful on Ingwelala during the summer continues. Leopard sightings were considerably up when compared month on month. Disappointingly, the buffalo numbers dropped off, their dispersal most likely due to the regional improvement of grazing conditions.

Wild dogs were seen along the tar road.

General game sightings reported included impala, kudu, nyala, grey duiker, steenbok, hyena, side-striped jackal, spring hare and porcupine.

Very few birds were noted in the sightings register, but those mentioned were Ground Hornbill, African Spoonbill, Black Stork and White-headed Vulture.



Dwarf mongoose

Security

No incidents on Ingwelala during the reporting period.

One (GKEPF) security meeting attended at the South African Wildlife College (SAWC).

Road Kills

Nil.

General Fire Risk Management

Veld fire risk continues to be rated low due to “green” summer conditions.

Fire-fighting equipment is checked on a weekly basis.

Two tractors available to assist with fire-fighting (x2 water drawn carts).

X1 “Bakkie-Sakkie” serviceable and responsive on a “first call” basis.

X1 250-litre water cart and pump available for “fast response”, back up to “Bakkie-Sakkie”.

X 20 fire beaters and x4 knap-sack sprays in good working order.

Umbabat

No incursion (suspected poachers) into the Umbabat during the reported period.

One old male lion was euthenased, his body condition was very poor. The post mortem revealed chronic Bovine TB infection with lesions.

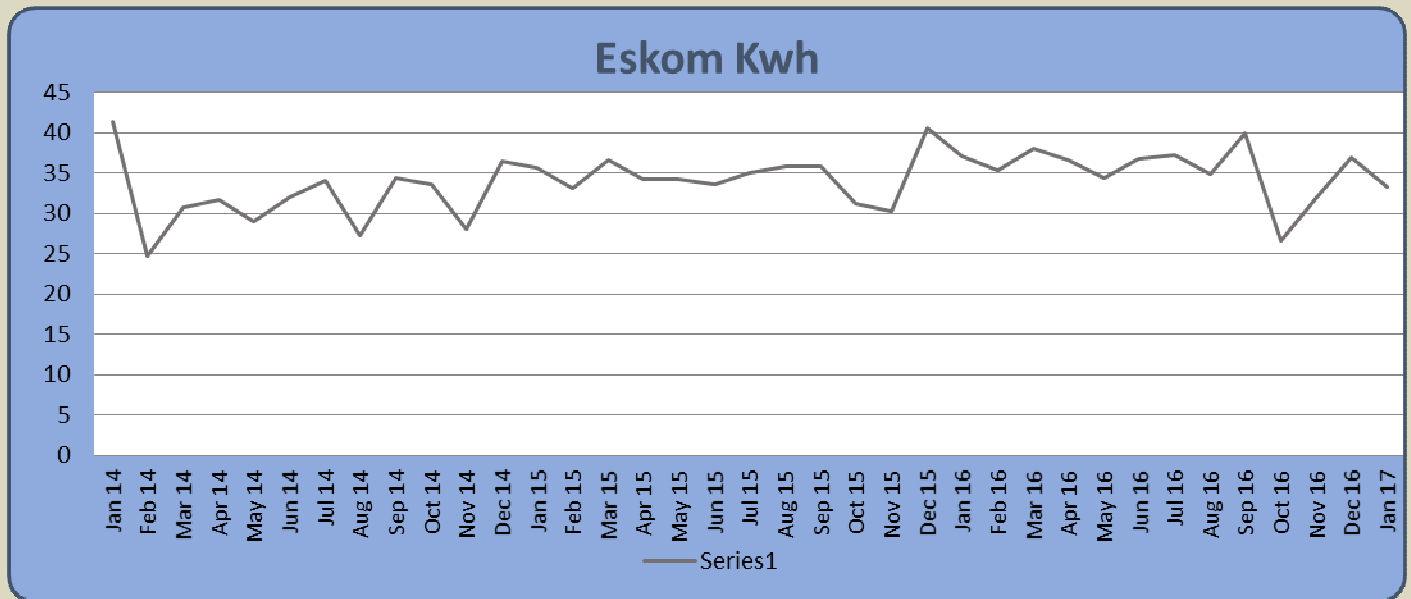
Water reticulation

Yield data for the boreholes is reflected in the following table, comparative with previous months.

BOREHOLE	JAN 17	DEC 16	NOV 16	OCT 16	SEP 16	AUG 16	JUL 16	JUN 16	MAY 16	APR 16	MAR 16
BH NO 1	1095	175	53	106	283	153	165	0	0	91	29
BH NO 2	949	883	814	642	921	590	603	382	517	440	590
BH NO 3	193	320	473	518	834	575	721	343	1129	314	883
BH NO 4	812	884	911	894	855	832	772	801	742	831	894
BH NO 5	345	392	470	446	473	462	320	477	324	435	467
BH NO 6	650	690	394	586	593	709	553	662	548	823	803
BH NO 7	288	207	455	565	425	232	165	434	295	396	214
BH NO 9	Solar	Solar	Solar	Solar	Solar	Solar	Solar	Solar	Solar	Solar	Solar
JB	0	0	0	0	111	329	285	345	265	343	284
GOEDEHOOP	0	507	870	762	753	1018	825	774	787	1132	874

Eskom Usage

The following graph shows the monthly Eskom Usage (Kwh) for Ingwelala.



Vehicles and Workshop

WORKSHOP	JAN 17	DEC 16	NOV 16	OCT 16	SEP 16	AUG 16	JUL 16	JUN 16	MAY 16	APR 16
JOB CARDS OPENED	37	53	39	43	51	51	63	65	49	68
JOB CARDS CLOSED	19	56	42	45	49	55	56	57	49	72
GENERATOR HOURS	3.8	13.7	2.4	6.8	11.7	0	8.2	8	16	0
DIESEL TANK (L)	100	205	425	475	550	700	700	350	500	750

The general fleet and static plant maintenance is 100% compliant with the servicing schedule.

Water Hilux (C1) developed starter problems.

Dyna Truck has a faulty water pump.

Conservation Land Cruiser (C2) required new CV joints.

Hilux Double-Cab air conditioner radiator to be replaced.

Building projects

Current (major) building projects are listed below:

Bung No	Name	Work requested	Approval	Builder	% Complete
69	John Segeren	Demolish & rebuild	October 2016	Chameleon	30%
115	Phil Raymond	Internal modifications	November 2016	Not yet selected	0%
161	Myles Bennett	Internal changes and new gazebo	Approved April 2016	Chameleon	95%
185	Weston Dickson	Demolish and rebuild	Approved January 2017	Chameleon	5%

Reception Statistics

GATE STATISTICS	JAN 17	DEC 16	NOV 16	OCT 16	SEP 16	AUG 16	JUL 16	JUN 16	MAY 16	APR 16
VEHICLES	179	458	185	218	256	338	307	343	213	303
MEMBERS GUESTS	481	1341	614	609	689	1013	1033	1034	534	949
UNACCOMP GUESTS	0	0	2	0	3	0	0	20	20	0
UNITS OCCUPIED	159	213	113	138	143	167	179	165	143	174
AIRBORNE VISITORS	8	2	7	11	8	3	19	18	4	7

COTTAGE NIGHTS	JAN 17	DEC 16	NOV 16	OCT 16	SEP 16	AUG 16	JUL 16	JUN 16	MAY 16	APR 16
HORNBILL	13	18	12	9	3	14	12	15	22	24
FRANCOLIN	8	18	9	8	10	14	24	16	9	14
GUINEAFOWL	11	7*	0	3	5	14	18	13	11	18

General:

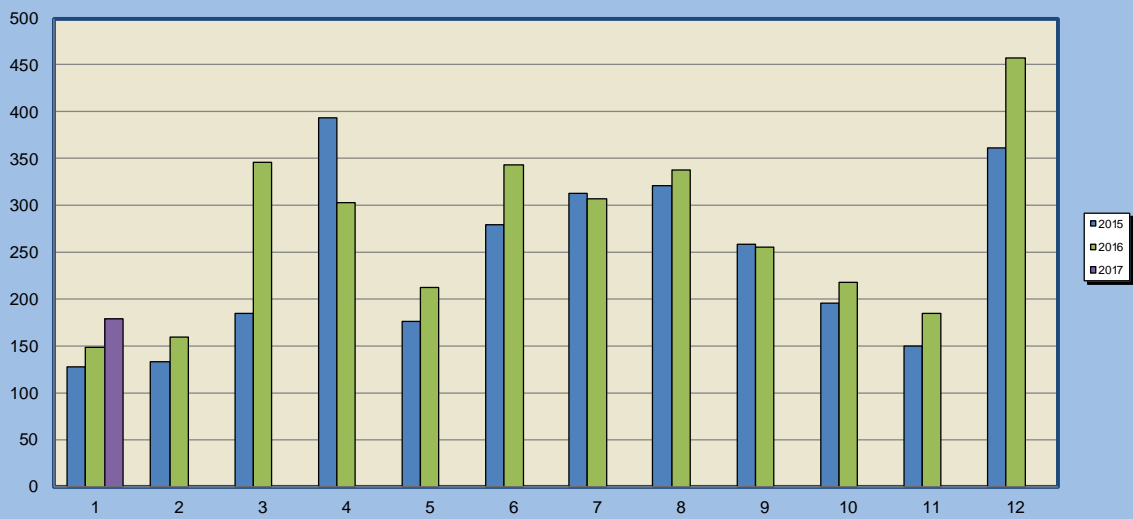
1. Our sincerest condolences to the Holmes family in Bungalow #49 over the recent passing away of a close family member.
2. A warm welcome is expressed to the Ebeling family for a share purchase in Bungalow # 106. May you have many enjoyable visits to Ingwelala in future.
3. Temporary trenching work is currently taking place in the Reception car park to reticulate water from the reservoir in the Workshop to the swimming pool grounds.

Thank you for your continued support.

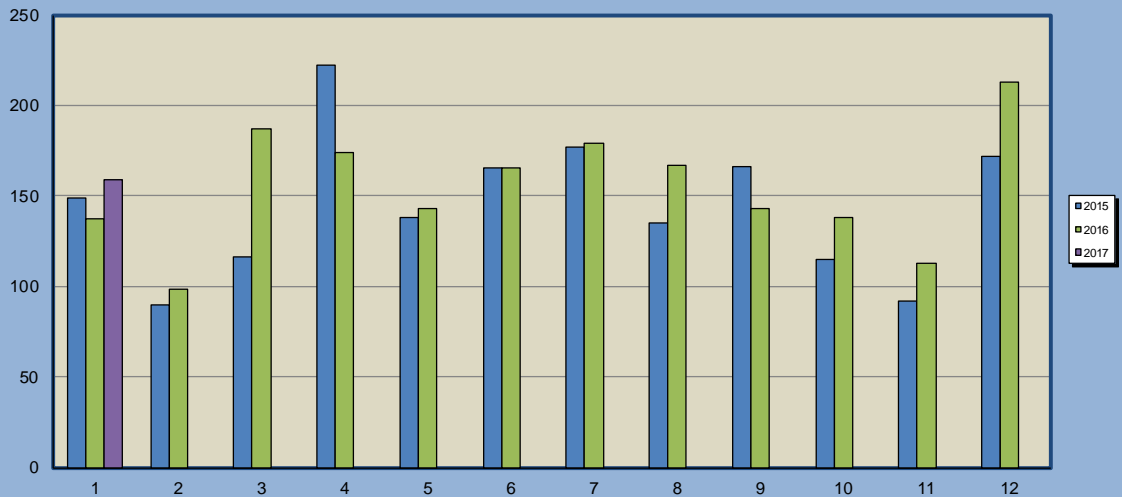
John Llewellyn
Reserve Manager

ANNEXURE1
Graphs

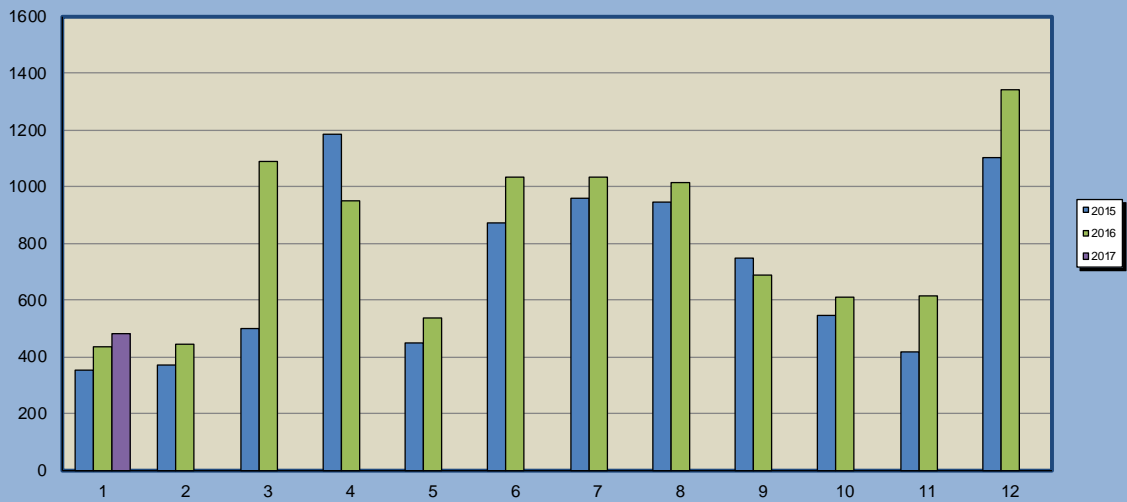
No. of Vehicles (per month)



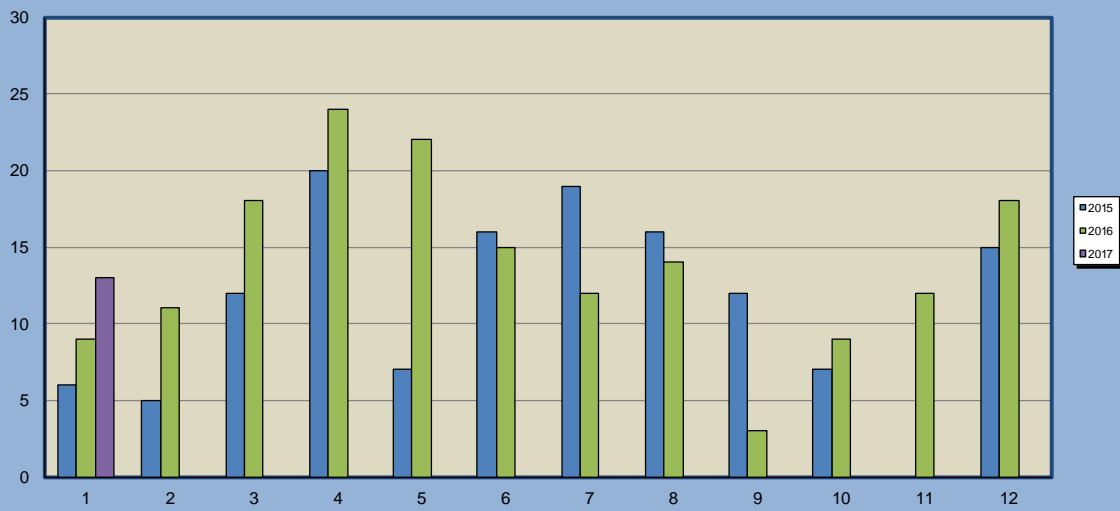
No. of Bungalows Occupied (per month)



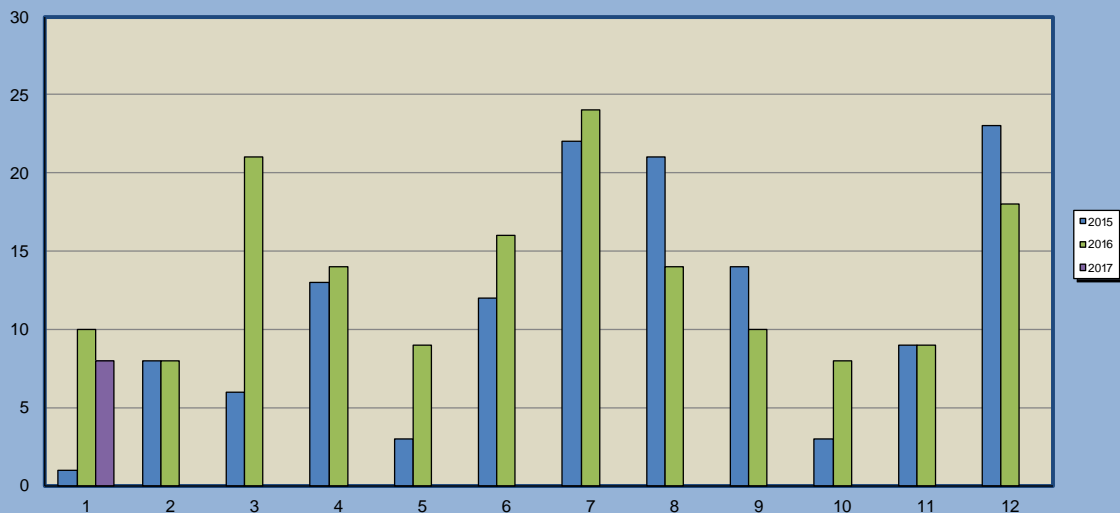
No. of Guests (per month)



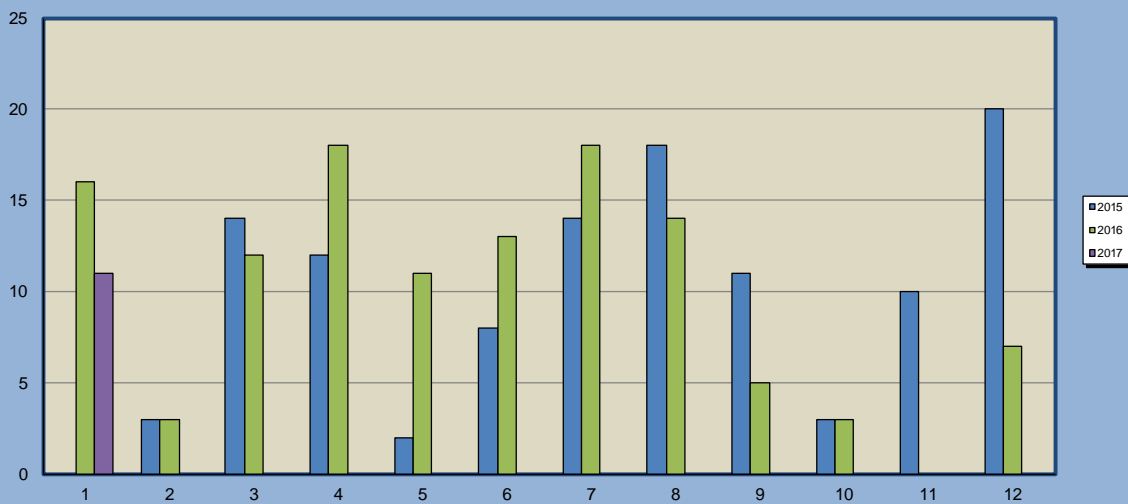
Hornbill Occupancy (nights per month)



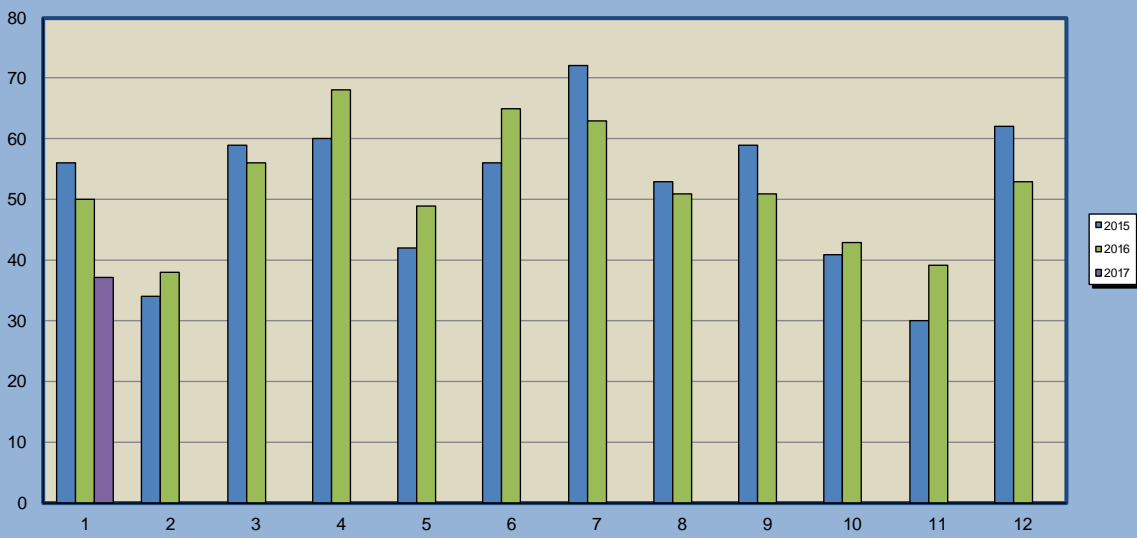
Francolin Occupancy (nights per month)



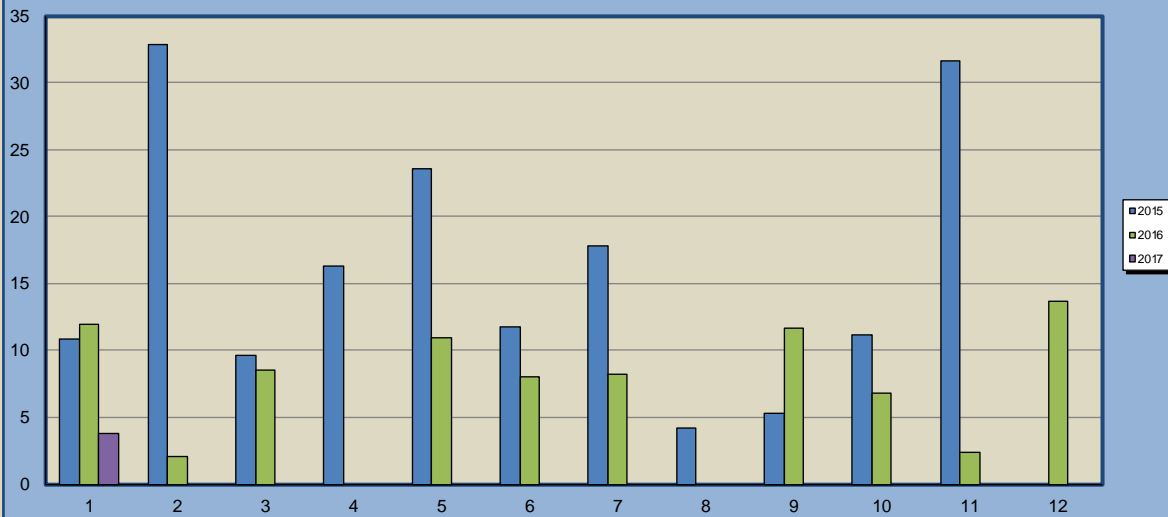
Guineafowl Occupancy (nights per month)



No. of job cards opened (per month)



Generator Hours (per month)



Ground Water Extraction m³
(combined boreholes per month)

