



## RESERVE REPORT

December 2017

### Introduction

A gale force wind that briefly passed through Ingwelala during the early evening of 31 December raised havoc in the veld. Several large trees were either literally snapped off at the trunk or uprooted. This included iconic marula and leadwood trees in the landscape, so sad to see.



This massive leadwood (*Combretum imberbe*), pictured above, was uprooted at the lay-bye near Farmhouse Crossing. This tree provided fantastic shade when viewing the watering hole in the river.



This is an example of a large marula (*Sclerocarya birrea*, pictured above, where the tree trunk is snapped off. The wind destroyed numerous large marula trees.



The above picture is of interest as it shows the hollow centre of the marula trunk. I have noticed over time that marula trees appear to have a hollow centre. However, I am unable to find much literature on this.



Pictured above, another large marula tree blown over at Old Farmhouse, one less resting place for a leopard!



The Nhlalalumi River, pictured above, flowed strongly on 24 December, for several hours vehicles could not cross the causeway. During this event Ingwelala received only 15 mm of rain, but in the catchment in the southern Timbavati some camps reported up to 150mm of rain falling in the same period.



## **Leopard and lion cub interaction**

Andrew Louw from Bungalow # 43 visited Ingwelala recently and agreed to share an unexpected, yet fascinating account, including pictures of an adult leopard discovering three lion cubs at Mermaid Crossing. Click on the link below to read more.....

<http://www.ingwelala.co.za/files/lt%20did%20not%20read%20the%20book.pdf>

The following link in Dropbox is very educational regarding approaching and viewing elephants, click on the link below to discover invaluable tips.....

<https://www.dropbox.com/s/aeuiz1n163oaay/FINALBrochure8Aug2016.pdf?dl=0>

## **Staff complement**



HT\_OrganisationalC  
hart\_Jan2018.pptx

## **Staff Movement**

X 2, the resignation of Mark and Karen Shaw, whom we thank for their valuable contribution to Ingwelala over the past four years and four months. Wishing them every success in their new venture in Nelspruit, and for a healthy daughter due in mid-January.

## **Staff profile (Meet the team):**



Theodolate Mgiba joined the Ingwelala Housekeeping Team as a permanent employee on 01 July 2012. Since commencing in Housekeeping, Theodolate has assisted in the Laundry, Guest Cottages, Members' bungalows and undertaken relief duties at Sibon.

Theodolate has a home in Cottondale Village, near Acornhoek, her son Admire, is 13 years old and her daughter Kwanala, is three and a half years old. The children are cared for by her sister.

At school, Theodolate reached Grade 12, but due to tough circumstances that year, was unable to pass her final exams. Mathematics was her favourite subject. Extra mural activities and interests included a passion for Drama and Acting.

When chatting about Ingwelala, likes and dislikes, Theodolate was keen to acknowledge her enjoyment of the staff being friendly towards one another, and that the supervisors are very approachable when there is a need to discuss challenges and assist with problem solving, in both work and personal capacities. Problem solving on your own, is not always that easy. Theodolate suggested that in Vuka Ingwe a creche type facility would be welcomed for visiting children.

On the wildlife front, a lion is Theodolite's favourite animal, because her surname means lion. Her favourite plant is the impala lily because it survives on very little water and the flowers are beautiful.

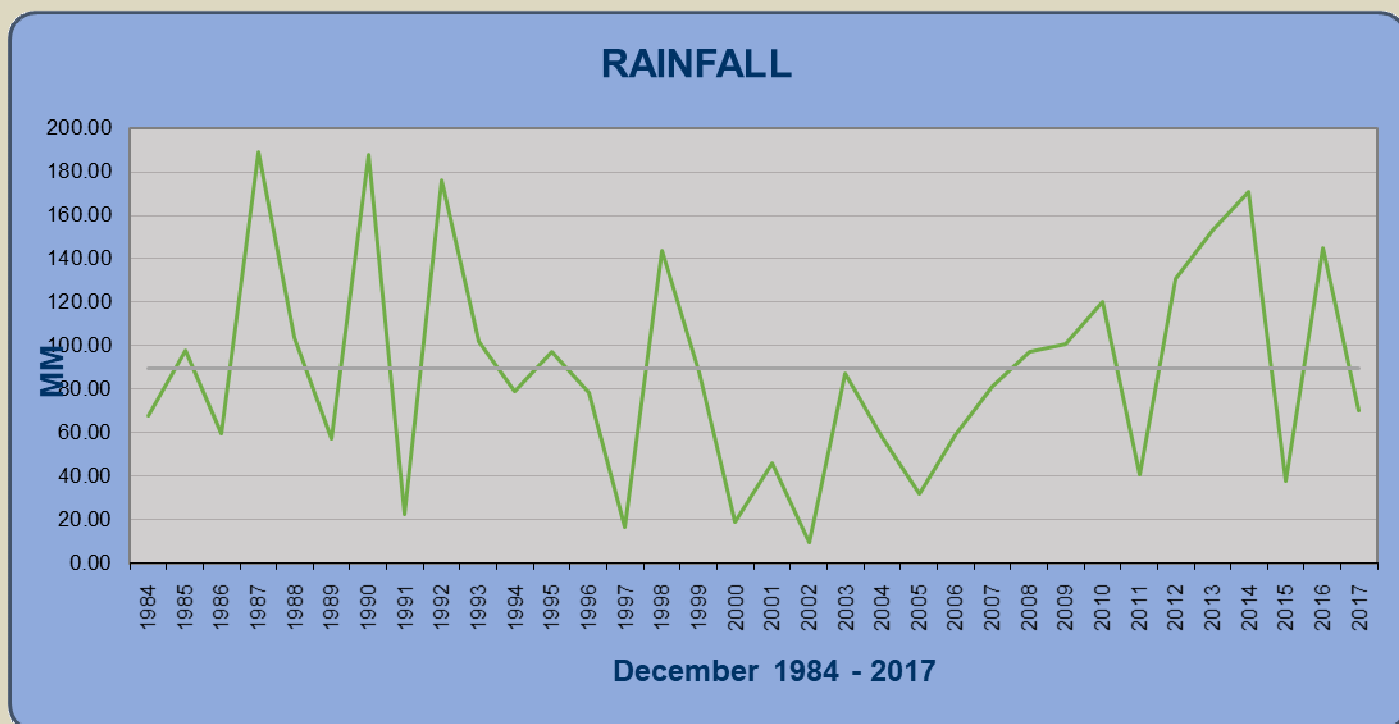
### **Bungalows for sale**

Nil

### **Climate and rainfall (summary)**

Rainfall: 64.6 mm  
Minimum temperature: 17 degrees Celsius.  
Maximum temperature: 40 degrees Celsius.

The following graph summarises total rainfall recorded at Ingwelala for the month of December over the past 33 years.



(Note: December 2017: 64.6 mm rainfall is well below than the monthly average of 89.6 ml)

### **Conservation**

#### **Alien plant eradication**

X6 mature stands of *Opuntia spp* treated with herbicide.

#### **Veld Rehabilitation**

An early indication of the gypsum and shallow contours introduced on Serengeti Plains is aiding water absorption and slowing down lateral run off.

The mopane trial site on Goedehoop is showing promising signs of potential grass competition, but it is early dates yet, a lot more rain is needed to understand the full dynamics. The packing of the shallow drainage lines to trap precious top soil is also showing promising signs at these early stages.

#### **Erosion Control**

Nil.

## **Roads and Tracks**

Western Boundary Road on Goedehoop suffered degrees of wash away which was attended to.

After the Nhlalalumi River flowed on the 24 December, the crossings were attended to where required.

## **Airstrip**

The cable fence on the eastern side of the airstrip was repaired and re-tensioned after a game viewer/vehicle drove over it.

The encroaching vegetation on the apron was treated with herbicide.

The airstrip surface is inspected on a regular basis and the general condition recorded in a register.

A reminder please that all airstrip users must complete (once off) an ***Ingwelala Airstrip Indemnity Form*** before landing. Indemnity forms are obtainable from [reception@ingwelala.co.za](mailto:reception@ingwelala.co.za) Guest pilots must also complete the form before using the airstrip.

## **Fencing**

No breaches by animals to the camp fence.

The fence required repairing at certain places at month end after gale force winds damaged trees and branches that fell onto the fence.

## **Bomas, Hides and Picnic Sites**

One of the benches at Aloe Ridge mysteriously disappeared over the edge and was recovered in smashed pieces. It is uncertain if the cause was human vandalism or the gale force wind on the night of 31 December.

## **Game sightings**

The previous month's game sightings blew hot and cold, as it can. There were periods when sightings were plentiful and there were times when sightings were few and far between. In particular elephant and buffalo sightings were infrequent. The absence of any grass sward to speak of and the recent impact of the drought explains the general absence of buffalo. Lion and leopard sightings were reasonable, with the joy of several cubs been seen for both cat species, and several kills, which always makes for good sightings along with photographic opportunity.

Packs of wild dogs have been active, the largest number in a pack being 18, but mostly a pack of 11 dogs were seen.

There was a report of a cheetah seen on Buffelsbed.

Other general game sightings included spotted hyena, giraffe (one herd of 14), impala, kudu, nyala, warthog (several with youngsters), genet, porcupine (several sightings mentioned), honey badger, banded mongoose, baboon, vervet monkey, spring hare, hippo and crocodile.

## **Security**

No incidents on Ingwelala during the reporting period.

## **Road Kills**

X 2 Tortoises

X 3 Chameleons

X 6 Tree squirrels

## **General Fire Risk Management**

Veld fire and general fire risk is slightly reduced month on month.

Fire-fighting equipment is checked on a weekly basis.

X 2 tractors available to assist with fire-fighting (x2 water drawn carts).

X 1 "Bakkie-Sakkie" serviceable and responsive on a "first call" basis.

X 20 fire beaters and x4 knap-sack sprays in good working order.

## **Umbabat**

Nothing to report.

## **Water reticulation**

Yield data for the boreholes is reflected in the following table, comparative with previous months.

<b>BOREHOLE</b>	<b>DEC 17</b>	<b>NOV 17</b>	<b>OCT 17</b>	<b>SEP 17</b>	<b>AUG 17</b>	<b>JUL 17</b>	<b>JUN 17</b>	<b>MAY 17</b>	<b>APR 17</b>	<b>MAR 17</b>	<b>FEB 17</b>
BH NO 1	149	0	150	277	428	0	34	298	188	87	97
BH NO 2	1603	1274	992	1082	959	1113	1043	1000	1141	1005	669
BH NO 3	425	682	534	653	531	1176	151	557	681	342	683
BH NO 4	0	768	0	0	0	78	181	483	425	322	753
BH NO 5	534	517	293	159	151	158	238	467	445	353	245
BH NO 6	565	1055	1218	1082	1018	769	367	675	622	683	107
BH NO 7	0	0	0	0	0	0	0	0	0	0	2
BH NO 9	Solar	Solar	Solar	Solar	Solar	Solar	Solar	Solar	Solar	Solar	Solar
JB	0	0	0	58	350	1282	491	278	43	0	0
GOEDEHOOP	1297	774	1119	480	664	290	1312	1395	780	0	0

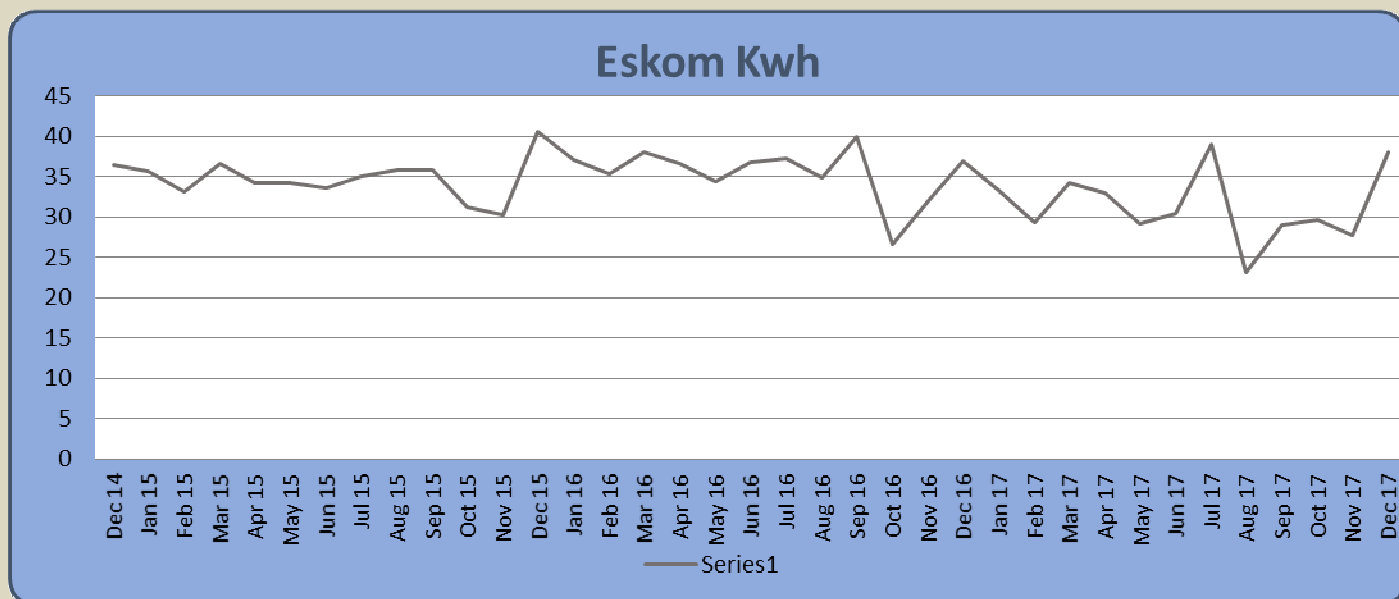
## **Vehicles and Workshop**

<b>WORKSHOP</b>	<b>DEC 17</b>	<b>NOV 17</b>	<b>OCT 17</b>	<b>SEP 17</b>	<b>AUG 17</b>	<b>JUL 17</b>	<b>JUN 17</b>	<b>MAY 17</b>	<b>APR 17</b>	<b>MAR 17</b>
JOB CARDS OPENED	64	36	54	36	75	68	48	67	46	55
JOB CARDS CLOSED	66	37	50	38	54	53	58	63	57	56
GENERATOR HOURS	22	1.1	9.3	0	1	2.6	0	6.6	10.9	0
DIESEL TANK (L)	80	345	380	430	430	500	575	575	650	850

The general fleet and static plant maintenance is 100% compliant with the servicing schedule.

## Eskom Usage

The following graph shows the monthly Eskom Usage (Kwh) for Ingwelala.



## Building projects

Current (major) building projects are listed below:

Bung No	Name	Work requested	Approval	Builder	% Complete
10-13	Peter Dittberner	New gazebo & internal upgrades	August 2017	Dukes Construction	80%
38	Gordon Pascoe	Demolish & rebuild	July 2017	Dukes Construction	20%
44	Cecil Bodenstein	New patio & gazebo & internal upgrades	June 2017	Owner builder	35%
86	Martinus vd Reyden	New patio & gazebo & internal upgrades	July 2017	Chameleon	65%
185	Weston Dickson	Demolish and rebuild	January 2017	Chameleon	65%
202	Jan Kitshoff	Rethatch & internal upgrades	August 2017	Chameleon Hoffmans Thatching	60%

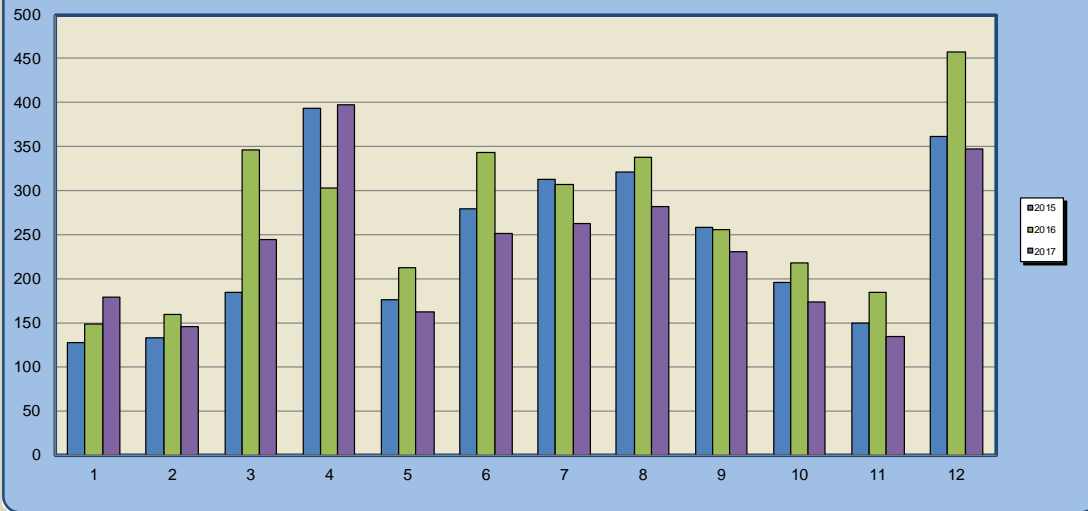
## Reception Statistics

GATE STATISTICS	DEC 17	NOV 17	OCT 17	SEP 17	AUG 17	JUL 17	JUN 17	MAY 17	APR 17	MAR 17
VEHICLES	347	135	174	230	282	263	251	162	397	245
MEMBERS GUESTS	1060	399	601	727	945	940	818	465	1328	798
UNACCOMP GUESTS	7	2	9	7	4	4	3	0	34	0
UNITS OCCUPIED	177	81	117	140	161	147	150	114	222	140
AIRBORNE VISITORS	1	6	9	4	5	17	16	2	17	3

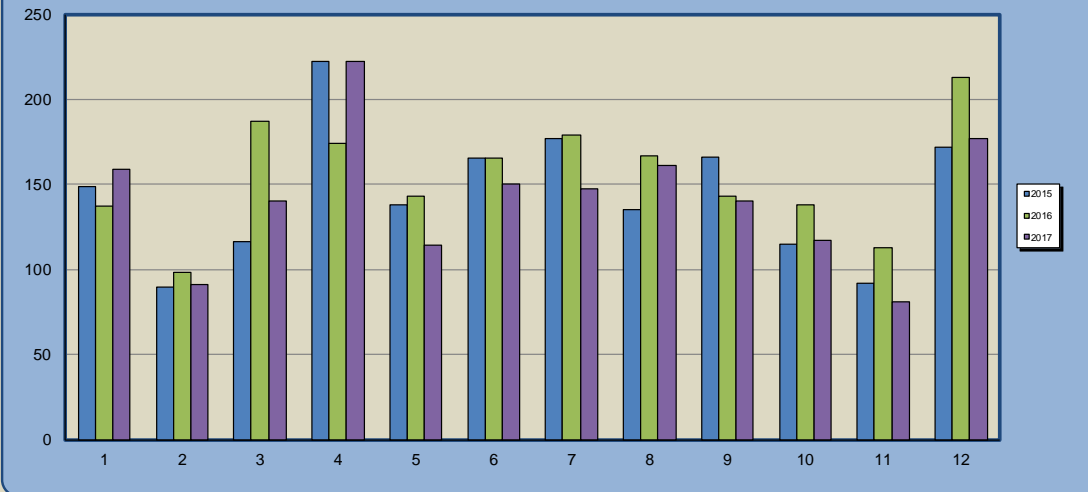
COTTAGE NIGHTS	DEC 17	NOV 17	OCT 17	SEP 17	AUG 17	JUL 17	JUN 17	MAY 17	APR 17	MAR 17
HORNBILL	27	15	15	19	18	24	12	7	28	20
FRANCOLIN	18	7	12	12	11	26	17	0	19	13
GUINEAFOWL	15	3	11	11	20	26	12	6	17	4

### Annexure 1: Graphs

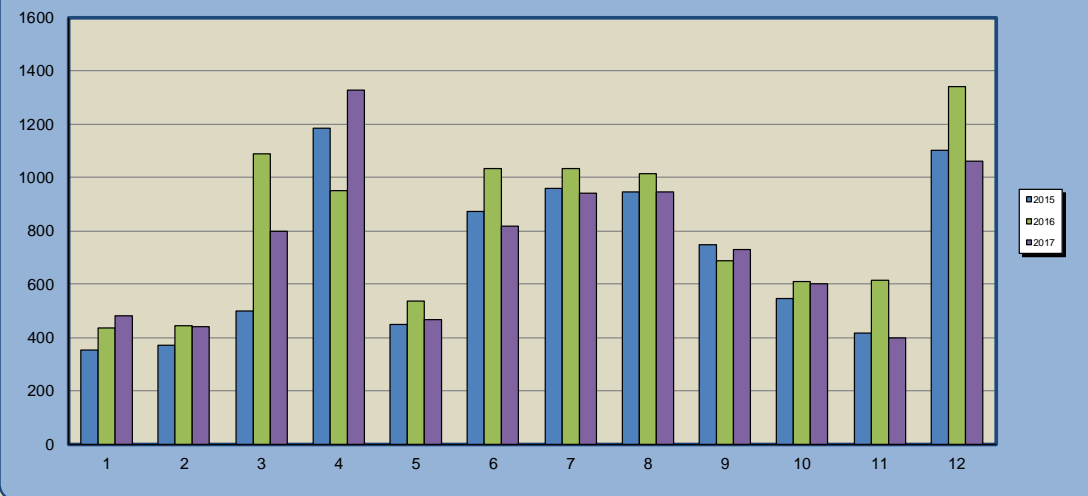
**No. of Vehicles (per month)**



**No. of Bungalows Occupied (per month)**

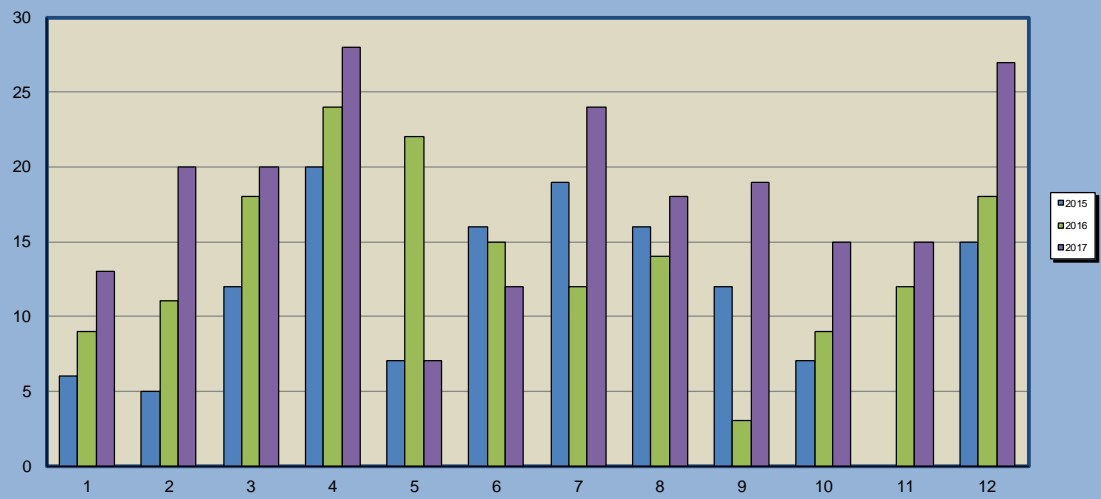


**No. of Guests (per month)**

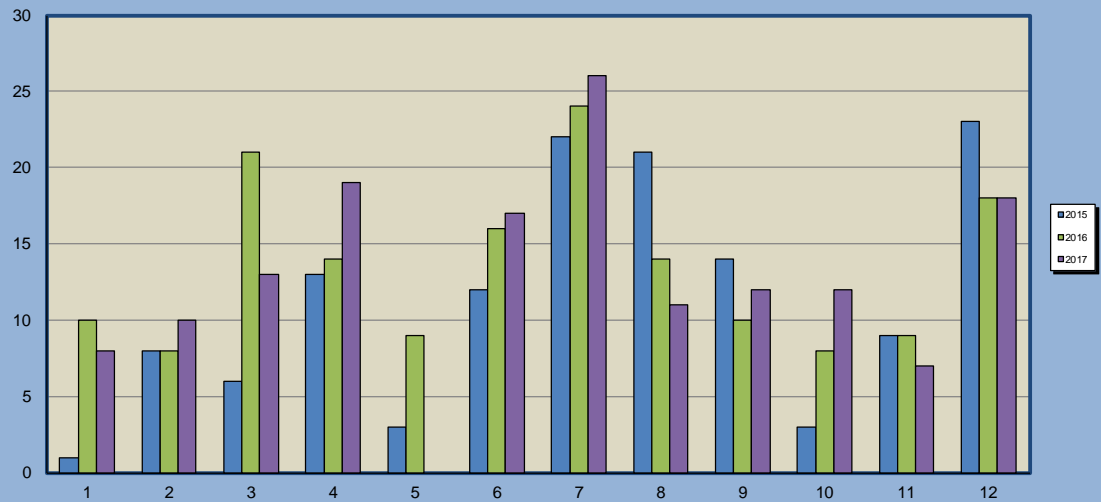




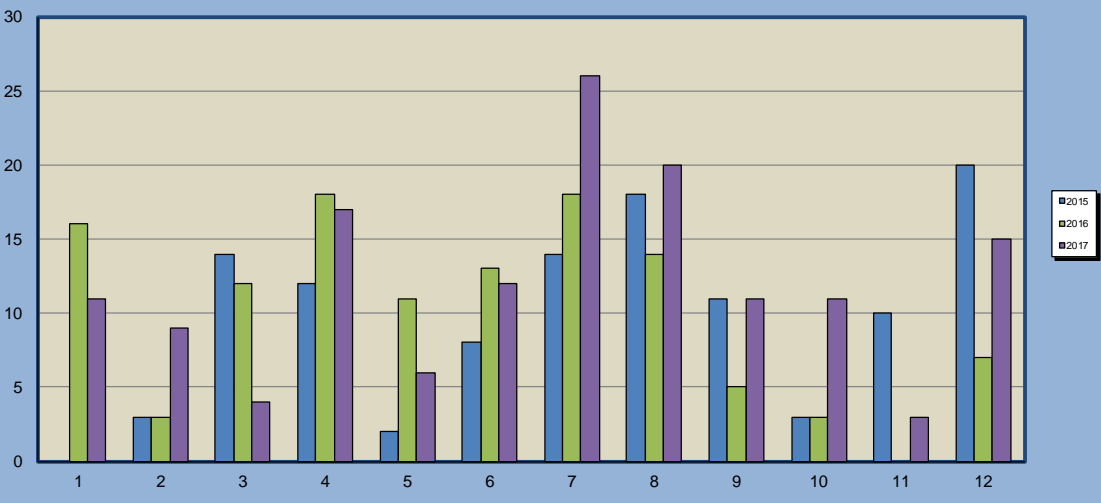
Hornbill Occupancy (nights per month)



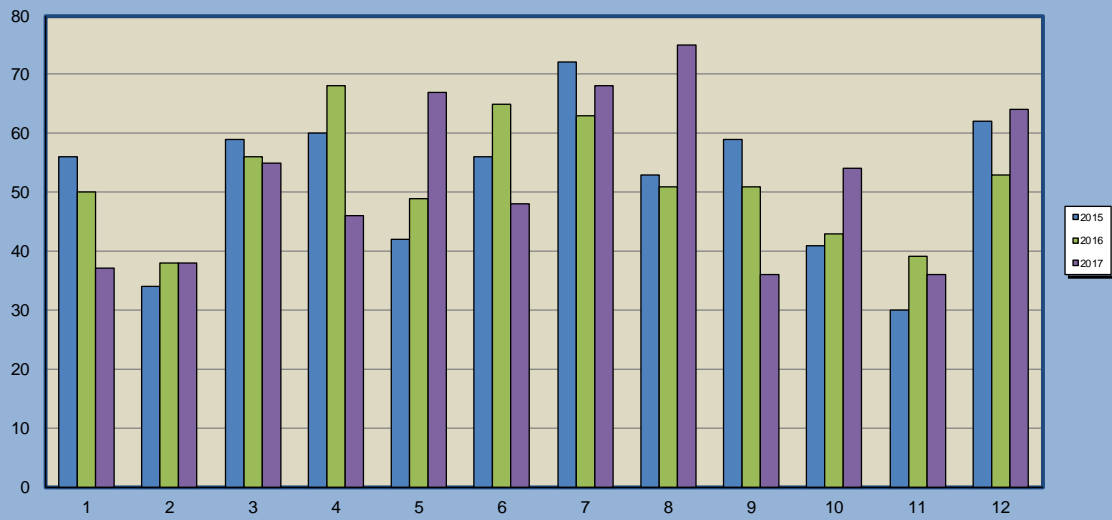
Francolin Occupancy (nights per month)



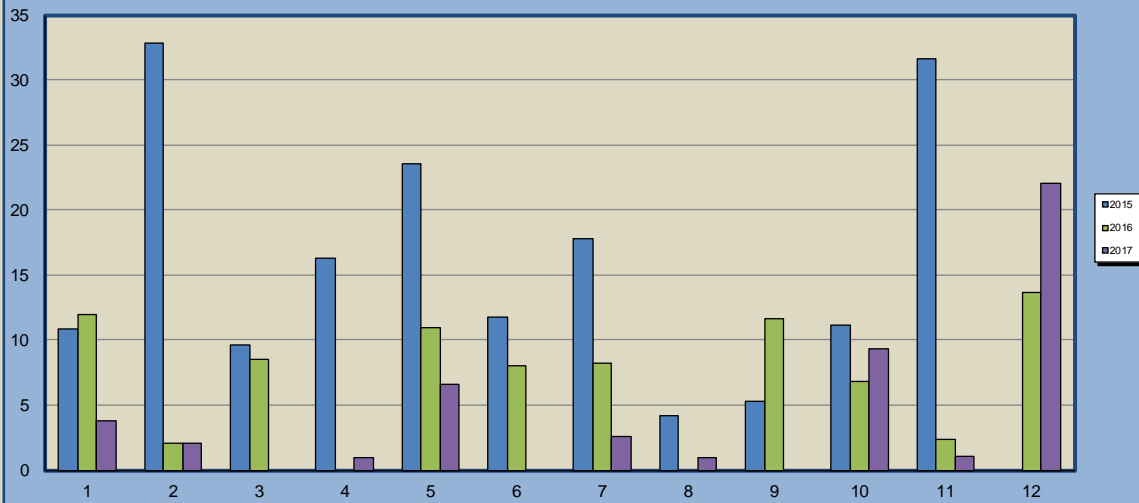
Guineafowl Occupancy (nights per month)



No. of job cards opened (per month)



Generator Hours (per month)



Ground Water Extraction m<sup>3</sup>  
(combined boreholes per month)

