



## RESERVE REPORT

September 2017

### Introduction

The annual game count was conducted by aerial census across the Associated Private Nature Reserves (APNR) in September 2017. Methodology is standardise through all the reserves as per the Peel/Pingo aerial census protocol (Peel *et al.*, 1995). These reserves include Balule, Klaserie, Umbabat, Timbavati and Thornybush, encompassing a total area of 196,684 hectares (**Table 1**). These private reserves have no fences along their shared boundaries and create an open system that extends into the Kruger National Park. A total of 48,297 individuals were counted in this year's census.

Reserve	Total Ha	% of APNR
Balule	52,456	26.67
Umbabat	17,704	9.00
Klaserie	59,002	30.00
Timbavati	53,392	27.15
Thornybush	14,130	7.18

**Table 1.** The five private reserves comprising the APNR, making up a total area of 196,684 Ha in the Greater Kruger National Park

### Megaherbivores

A total of 4,458 megaherbivores were counted across the APNR, down 49.54 % from 2016 (**Table 2**), despite the addition of Thornybush Nature Reserve and several new sub-regions within Balule. The largest drop in the landscape was the buffalo population, with a total 71.24% loss. Elephant and hippo numbers also decreased, but not to the extent buffalo numbers decreased.

Species	Balule	Umbabat	Klaserie	Timbavati	Thornybush	Total (2017)	Total (2016)	% Change
<b>Elephant</b>	721	141	548	465	349	2224	2630	-15.43726236
<b>Buffalo</b>	272	272	601	269	166	1580	5494	-71.2413542
<b>Hippo</b>	106	5	71	67	17	266	303	-12.21122112
<b>Total</b>	1163	425	1364	957	549	4458	8835	-49.54159593

**Total counts for the Umbabat 2017**

<u>SPECIES</u>	<b>2017</b>
Baboon Troops	1
Blue Wildebeest	6
Buffalo	272
Bushbuck	0
Duiker	6
Elephant	141
Giraffe	15
Grysbok	3
Hippo	5
Hyena	1
Impala	2558
Jackal, black backed	0
Kudu	153
Leopard	3
Lion	0
Nyala	15
Steenbok	21
Vulture Nests	1
Warthog	38
Waterbuck	1
Zebra	72
Honey badger	0
Ostrich	0
Raptors nest	3

**Annual game counts: 2003 - 2017**

<b>Umbabat Game Census</b>																
Species	2003	2004	2005	2006	2007	2008	2009	2010	2011	2012	2013	2014	2015	2016	2017	
Baboon Troops	3	3	0	3	1	1	1	0	0	2	0	4	0	1	1	
Blue Wildebeest	7	9	7	5	7	27	11	13	23	16	17	20	22	36	6	
Buffalo	739	17	3	494	3	32	24	839	308	202	47	452	380	794	272	
Bushbuck	0	2	2	1	0	0	0	1	3	0	0	1	1	0	0	
Duiker	7	5	3	4	5	5	6	3	1	10	7	10	12	10	6	
Elephant	86	150	101	104	64	166	163	90	192	73	30	231	219	248	141	
Giraffe	29	18	23	27	14	20	23	26	27	21	18	27	29	27	15	
Grysbuck	0	0	0	0	7	0	0	0	1	1	5	10	1	6	3	
Ground Hornbill	8	14	6	5	15	5	9	11	8	6	14	12	18	16	16	
Hippo	0	1	1	5	2	2	4	1	2	1	8	8	10	23	5	
Hyena	0	1	5	3	1	0	0	1	0	0	5	1	1	19	1	
Impala	877	911	1184	1356	1298	1430	1538	1418	1483	1518	1271	2016	1805	1497	2558	
Jackal,black backed	0	0	0	0	0	0	0	0	1	0	1	0	0	0	0	
Kudu	66	51	73	74	104	94	61	90	74	83	61	114	107	90	153	
Leopard	1	1	1	0	2	0	0	0	1	1	2	1	3	1	3	
Lion	2	0	0	0	9	0	0	2	4	0	5	2	20	10	0	
Nyala	0	6	0	1	0	0	0	0	0	3	0	5	0	0	15	
Steenbuck	4	6	16	10	11	27	21	18	17	31	23	37	51	30	21	
Vulture Nests			1	1	0	0	0	0	0	0	2	0	2	0	2	
Warthog	14	17	9	28	45	36	15	37	44	17	30	48	46	21	38	
Waterbuck	4	10	14	11	0	0	0	0	0	0	0	0	54	2	1	
Zebra	39	15	61	85	87	114	111	83	47	53	31	73	87	162	72	
Honey badger	0	0	0	0	0	0	0	2	0	2	0	0	0	1	0	
Ostrich	0	0	0	0	0	0	0	0	1	0	0	0	0	0	0	
Raptors nest	0	0	0	0	0	0	0	2	1	2	2	1	2	0	2	
Wild dogs													4	0	0	
Monkey Troops													2	0	2	
Crocodile													1	0	2	
Artificial water													187			

## Veld Rehabilitation on Serengeti Plains

- Figure 1, Exposed areas specifically selected for the gypsum trial on Serengeti Plains on Buffelsbed.
- Figure 2, Preparation of soil before applying the gypsum, tractor and rip to brake the crust of the soil and allow for the gypsum to penetrate the compacted topsoil.
- Figure 3, application of the gypsum.
- The objective is to condition/soften the crust/topsoil to allow maximum water absorption as well as grass seed penetration.



**Figure 1: Trial areas selected.**

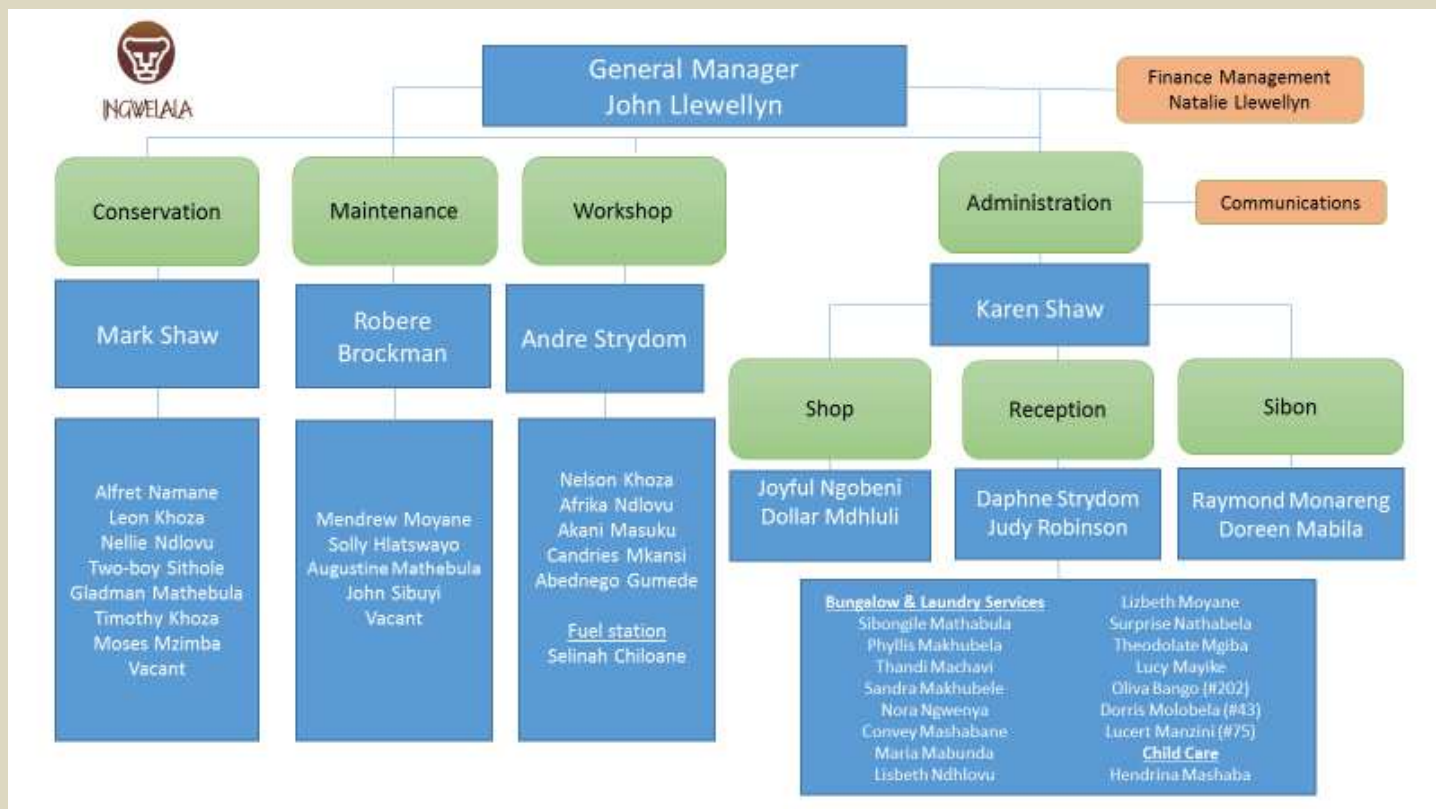


**Figure 2: Preparation of soils**



**Figure 3: Application of gypsum**

## Staff complement



## Staff Movement

Nil.

## Staff profile (Meet the team):



Nora Ngwenya was employed by Ingwelala on 04 February 1989 and had served the company loyally for the past 28 years. Initially Nora assisted keeping the general grounds area neat and tidy before transferring to Housekeeping. In those early days Nora worked as a domestic in the home of former management staff, Glen Divine. Later Nora was responsible for looking after the Guest Cottages and Laundry, these days Nora assists with general Housekeeping duties in Members bungalows.

Nora's family home is in Acornhoek, a divorcee with four adult children, three sons and one daughter. Her children have blessed Nora with seven grandchildren, Dumisani, Mathabelo, Shelton, Letabo, Brighten, Didelo and Idumedzi. Nora

explained her mother is still alive and her late father worked for Basil Reid as a heavy machine operator. At school, Nora passed Grade 7, English was her favourite subject.

When asked what Nora enjoys about Ingwelala, her reply was Vuka Ingwe, how much she enjoys spending time with her work colleagues, and that Ingwelala is Number 1!

Nora is a keen Kaiser Chiefs supporter. Her favourite animal is undecided, either a leopard or a lion, or both.

### **Bungalows for sale**

Bungalow # 18, a full (100%) share of seven shares for R4.90 million.

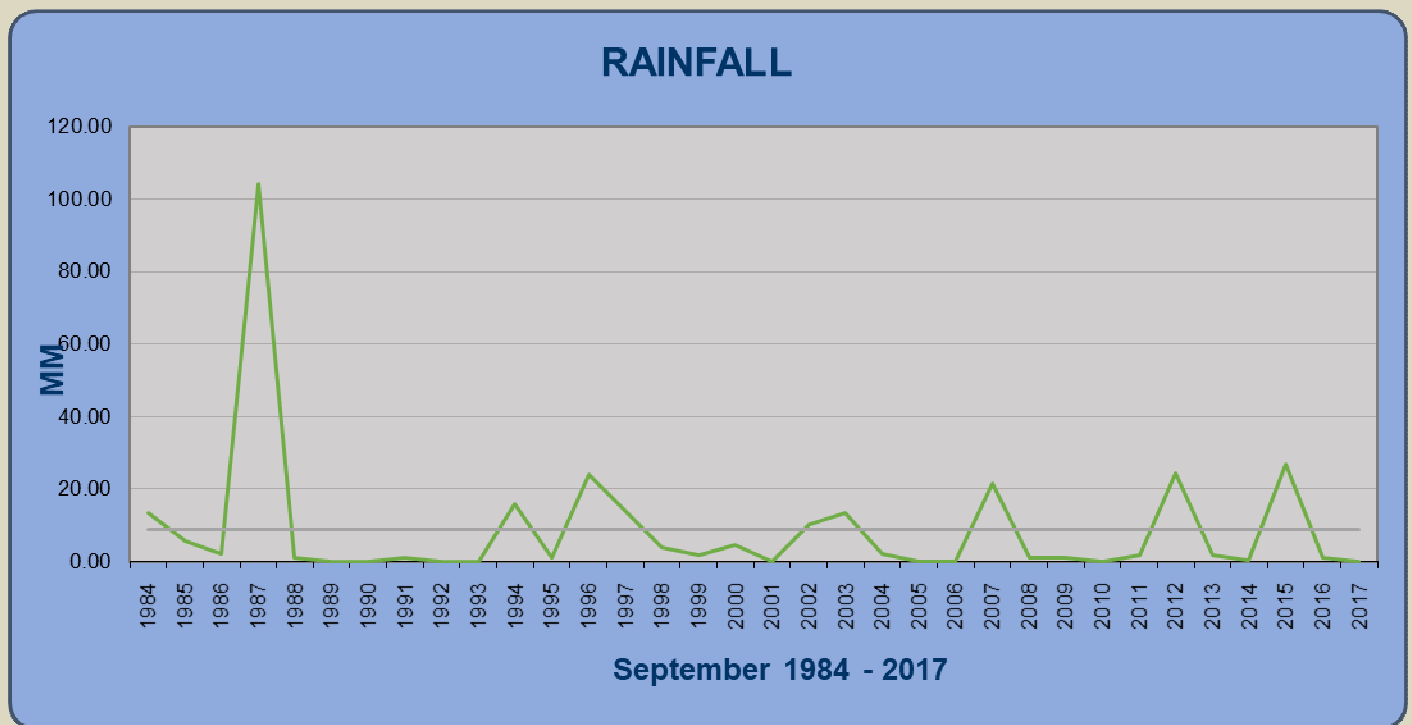
Bungalow # 37, 60% of seven shares for R1.58 million.

Bungalow # 97, a full (100%) share of seven shares for R5.20 million.

### **Climate and rainfall (summary)**

Rainfall: 0 mm  
Minimum temperature: 07 degrees Celsius.  
Maximum temperature: 34 degrees Celsius.

The following graph summarises total rainfall recorded at Ingwelala for the month of September over the past 33 years.



(Note: September 2017: 0 mm rainfall is less than monthly average of 8.8 mm)

### **Conservation**

#### **Alien plant eradication**

Nil

#### **Veld Rehabilitation**

Please refer to the text on Serengeti Plains in the Introduction.

#### **Erosion Control**

As per the Serengeti Plain in the Introduction.

## **Roads and Tracks**

Nil.

## **Airstrip**

The airstrip surface is inspected on a weekly basis and the general condition recorded in a register.

There was no further work done on the surface this month.

A reminder please that all airstrip users must complete (once off) an ***Ingwelala Airstrip Indemnity Form*** before landing. Indemnity forms are obtainable from [reception@ingwelala.co.za](mailto:reception@ingwelala.co.za) Guest pilots must also complete the form before using the airstrip.

## **Fencing**

The Camp fence was breached on seven different occasions, a significant change to the behavior of the bulls, where a lot more damage was caused to the water reticulation throughout the camp. This resulted in some days where the camp was out of water for considerable lengths of time. Thank you for your understanding and patience while staff repaired the breakages.

Two temporary staff were employed to assist with fence repairs.

## **Bomas, Hides and Picnic Sites**

These facilities are inspected and cleaned on a regular basis.

## **Game sightings**

During the month of September, sightings of elephant, which were predominantly breeding herds, were plentiful. A female elephant was seen in one herd with a deformed leg which has impacted on her style of walking, but has not affected her ability to keep up with the herd. Smaller bachelor groups of buffalos were seen around the camp area. The pride of 7 lions are being seen on a more frequent basis. Leopards were seen on the odd occasion in the second half of September with reports of two of the leopards having acquired wounds on their hind quarters due to territorial fighting.

Aardvark sightings have been captured during the night, taken on camera traps at different locations throughout the reserve.

The wild dogs have been seen frequently on six different occasions.

Game sightings included spotted hyena, side-striped jackal, black-backed jackal, giraffe, zebra, impala, kudu, nyala, bushbuck, waterbuck, Sharpe's Grysbok, grey duiker, steenbok, warthog, genet, civet, porcupine, honey badger, banded mongoose, dwarf mongoose and vervet monkey.

The adult giraffe that had the natural head injury due to fighting had to be euthanised due to the behaviour of the animal changing as well as losing body condition after the wound could not heal.

Birds noted in the sightings register were the Martial Eagle, Tawny Eagle, Fish Eagle, Verreaux's Eagle-Owl, Ground Hornbill, Temminck's Courser, Green-winged Pytilia and Yellow-billed Kites. Wahlberg's Eagle has returned for the summer and was noted only a few days after the Yellow-billed Kites were spotted.

## **Security**

No incidents on Ingwelala during the reporting period.

## **Road Kills**

Nil.

**General Fire Risk Management**

Veld fire and general fire risk remains very high due to the dry veld conditions.

Fire-fighting equipment is checked on a weekly basis.

X 2 tractors available to assist with fire-fighting (x2 water drawn carts).

X 1 “Bakkie-Sakkie” serviceable and responsive on a “first call” basis.

X 20 fire beaters and x4 knap-sack sprays in good working order.

**Umbabat**

The new security service provider, Noctuam, has deployed and orientated well.

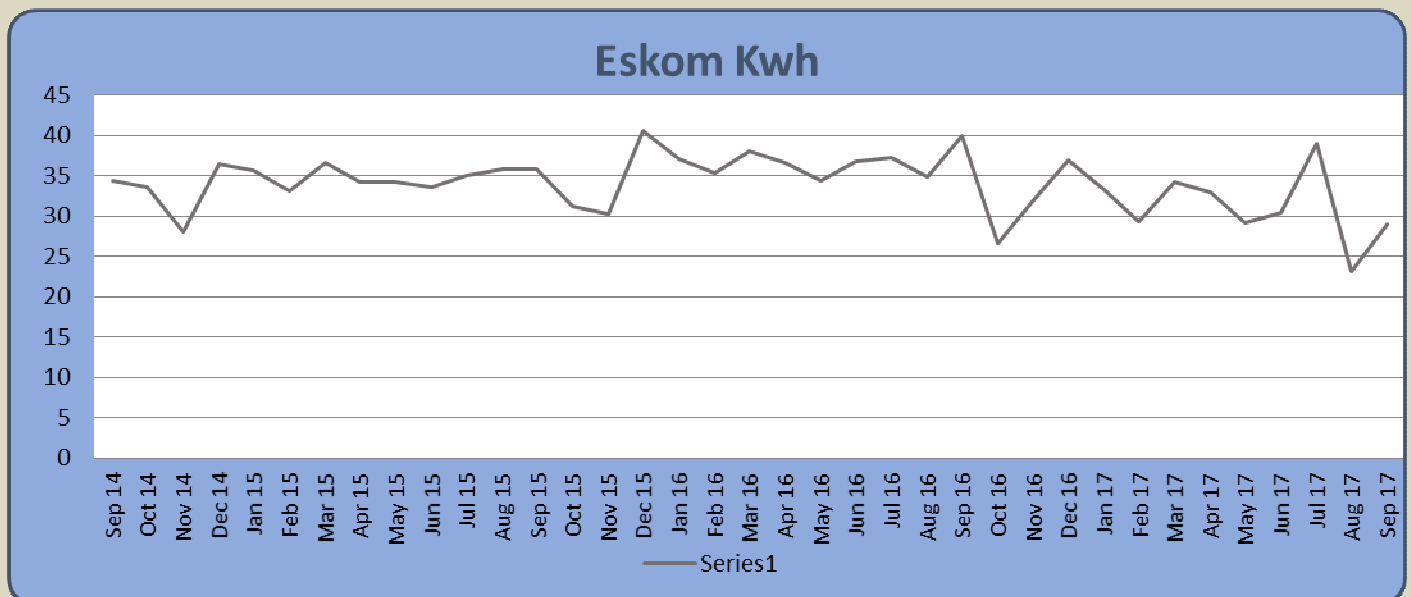
**Water reticulation**

Yield data for the boreholes is reflected in the following table, comparative with previous months.

BOREHOLE	SEP 17	AUG 17	JUL 17	JUN 17	MAY 17	APR 17	MAR 17	FEB 17	JAN 17	DEC 16	NOV 16
BH NO 1	277	428	0	34	298	188	87	97	1095	175	53
BH NO 2	1082	959	1113	1043	1000	1141	1005	669	949	883	814
BH NO 3	653	531	1176	151	557	681	342	683	193	320	473
BH NO 4	0	0	78	181	483	425	322	753	812	884	911
BH NO 5	159	151	158	238	467	445	353	245	345	392	470
BH NO 6	1082	1018	769	367	675	622	683	107	650	690	394
BH NO 7	0	0	0	0	0	0	0	2	288	207	455
BH NO 9	Solar	Solar	Solar	Solar	Solar	Solar	Solar	Solar	Solar	Solar	Solar
JB	58	350	1282	491	278	43	0	0	0	0	0
GOEDEHOOP	480	664	290	1312	1395	780	0	0	0	507	870

**Eskom Usage**

The following graph shows the monthly Eskom Usage (Kwh) for Ingwelala.



## Vehicles and Workshop

WORKSHOP	SEP 17	AUG 17	JUL 17	JUN 17	MAY 17	APR 17	MAR 17	FEB 17	JAN 17	DEC 16
JOB CARDS OPENED	36	75	68	48	67	46	55	38	37	53
JOB CARDS CLOSED	38	54	53	58	63	57	56	30	19	56
GENERATOR HOURS	0	1	2.6	0	6.6	10.9	0	2.1	3.8	13.7
DIESEL TANK (L)	430	430	500	575	575	650	850	850	100	205

The general fleet and static plant maintenance is 100% compliant with the servicing schedule.

## Building project

Current (major) building projects are listed below:

Bung No	Name	Work requested	Approval	Builder	% Complete
10-13	Peter Dittberner	New gazebo & internal upgrades	August 2017	Dukes Construction	30%
38	Gordon Pascoe	Demolish & rebuild	July 2017	Dukes Construction	5%
44	Cecil Bodenstein	New patio & gazebo & internal upgrades	June 2017	Owner builder	5%
86	Martinus vd Reyden	New patio & gazebo & internal upgrades	July 2017	Chameleon	5%
115	Phil Raymond	Internal modifications	November 2016	Dukes Construction	60%
116	Geoff Watson	Demolish and rebuild	February 2017	Chameleon	55%
124	Wayne van Rensburg	Lath pergola for shade	July 2017	Dukes Construction	0%
185	Weston Dickson	Demolish and rebuild	January 2017	Chameleon	25%
186	John Hawkins	New gazebo and raise patio	July 2016	Dukes Construction	95%
202	Jan Kitshoff	Rethatch & internal upgrades	August 2017	Chameleon Hoffmans Thatching	45%

## Reception Statistics

GATE STATISTICS	SEP 17	AUG 17	JUL 17	JUN 17	MAY 17	APR 17	MAR 17	FEB 17	JAN 17	DEC 16
VEHICLES	230	282	263	251	162	397	245	145	179	458
MEMBERS GUESTS	727	945	940	818	465	1328	798	437	481	1341
UNACCOMP GUESTS	7	4	4	3	0	34	0	8	0	0
UNITS OCCUPIED	140	161	147	150	114	222	140	91	159	213
AIRBORNE VISITORS	4	5	17	16	2	17	3	7	8	2

COTTAGE NIGHTS	SEP 17	AUG 17	JUL 17	JUN 17	MAY 17	APR 17	MAR 17	FEB 17	JAN 17	DEC 16
HORNBILL	19	18	24	12	7	28	20	20	13	18
FRANCOLIN	12	11	26	17	0	19	13	10	8	18
GUINEAFOWL	11	20	26	12	6	17	4	9	11	7



General:

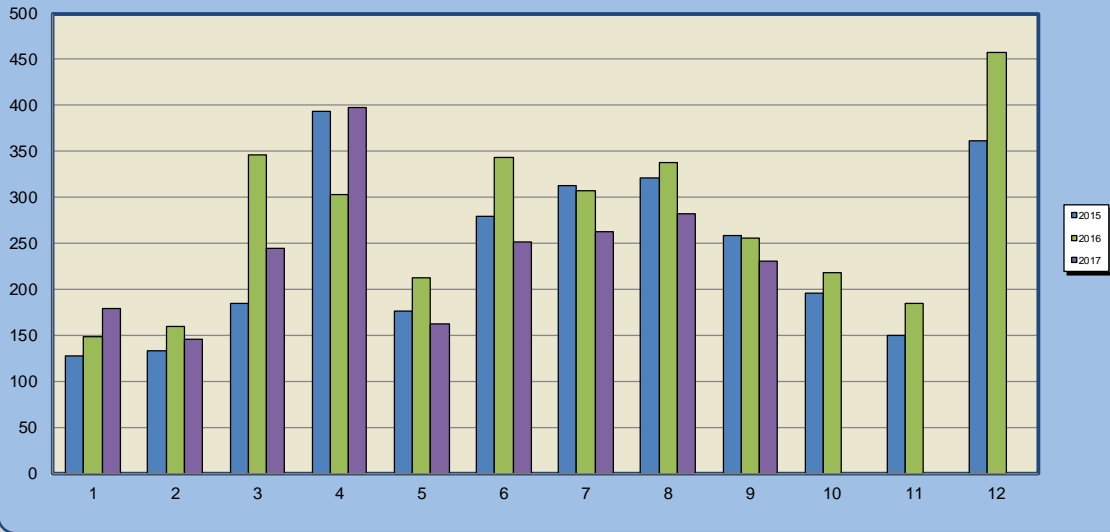
1. Please be reminded the AGM is on 16 November 2017. Registration is at 18h00. The venue is Johannesburg Country Club: Woodmead.

Thank you for your continued support.

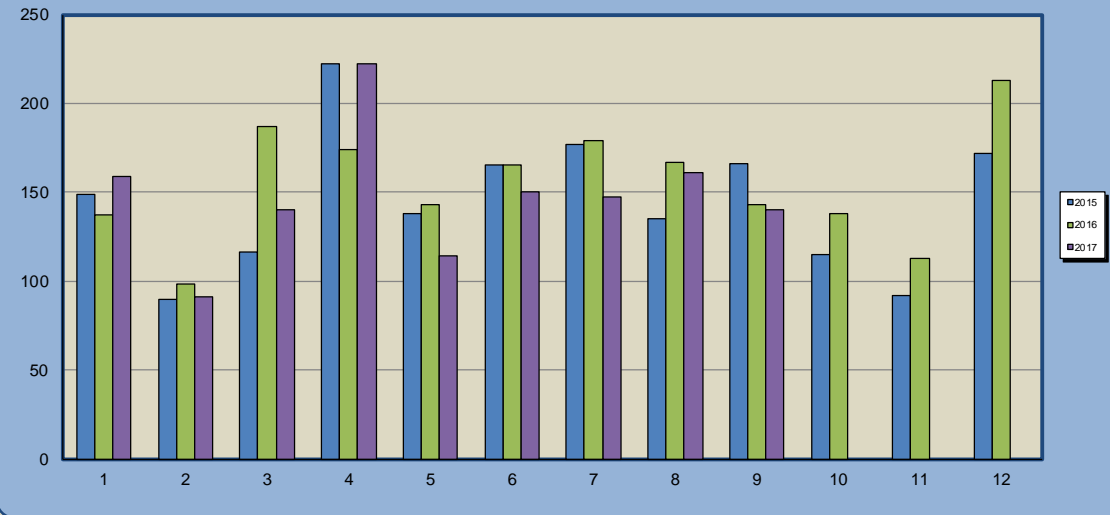
**Mark Shaw**  
**Conservation Manager.**

## ANNEXURE 1: GRAPHS

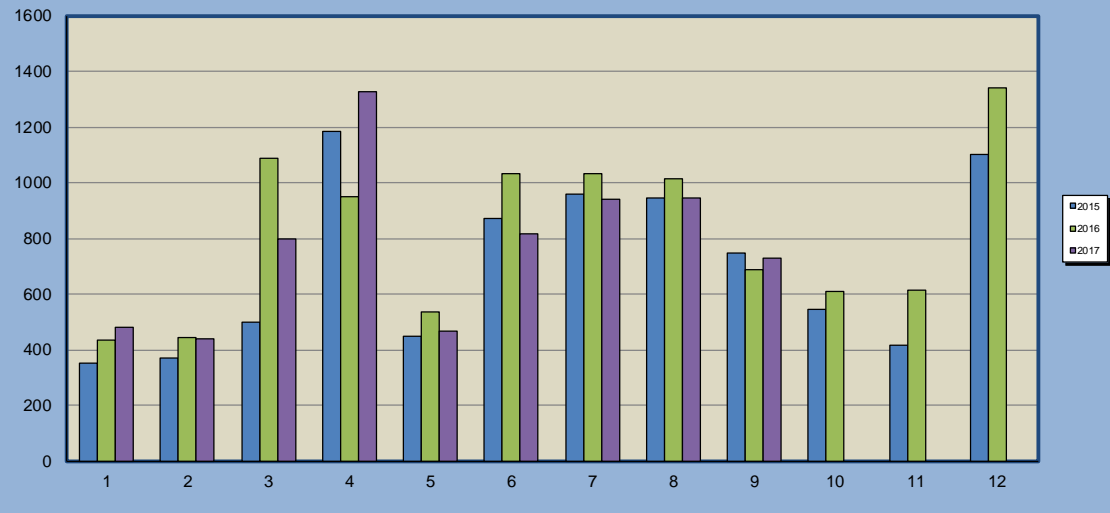
### No. of Vehicles (per month)



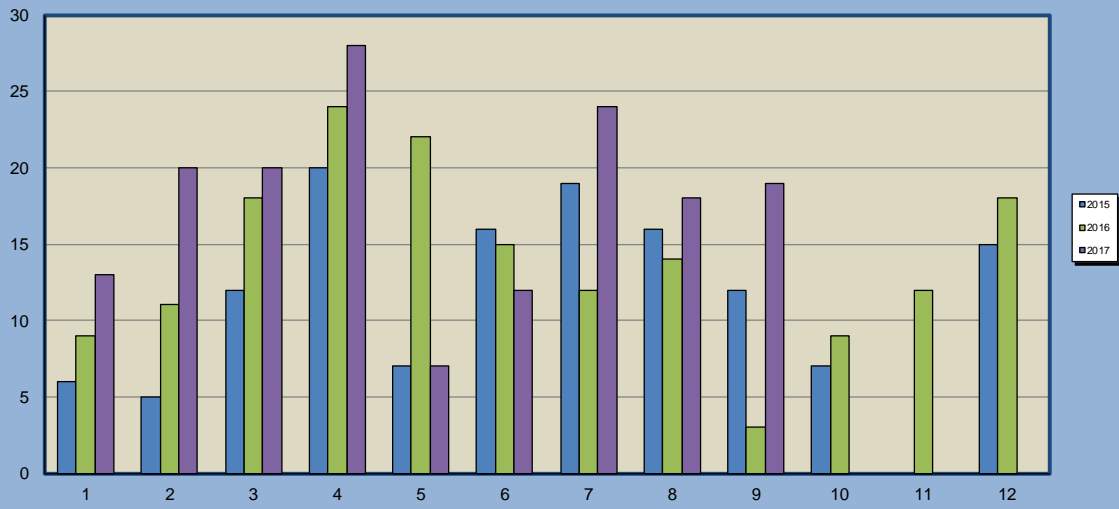
### No. of Bungalows Occupied (per month)



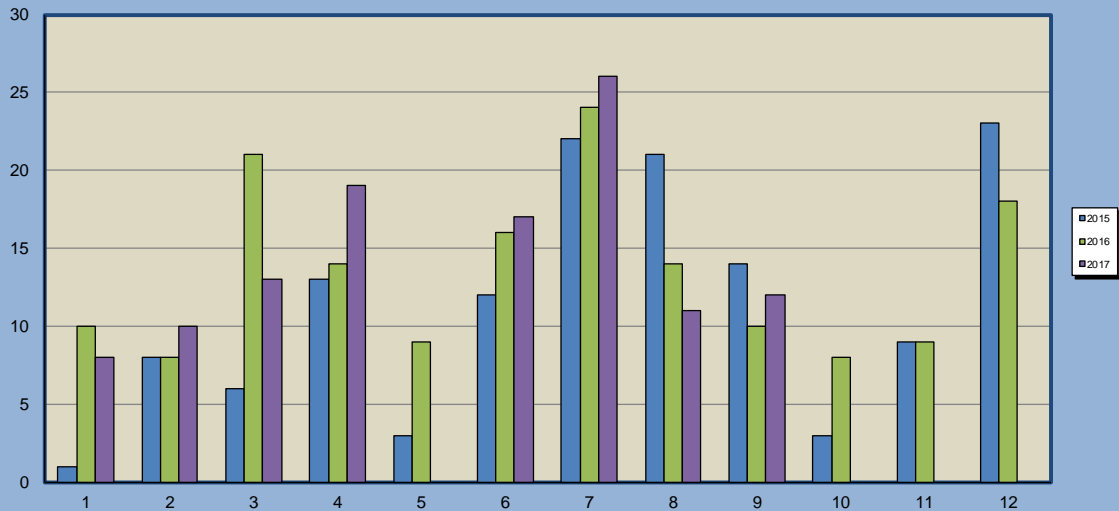
### No. of Guests (per month)



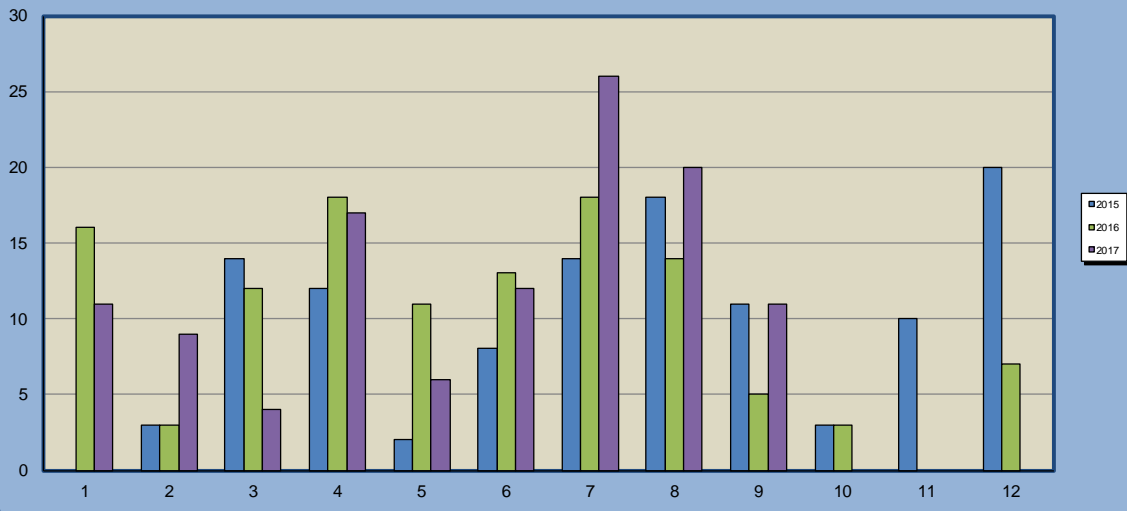
Hornbill Occupancy (nights per month)



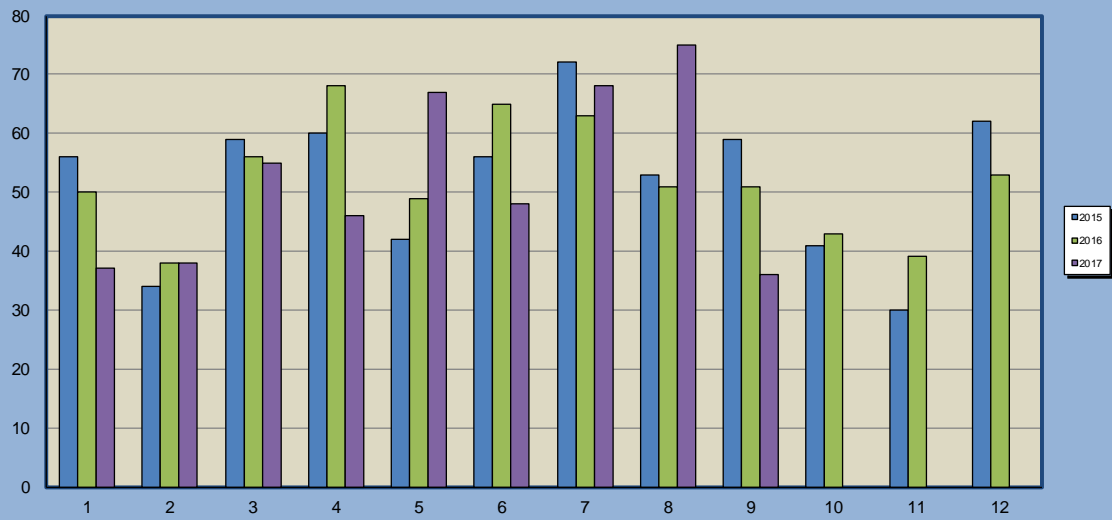
Francolin Occupancy (nights per month)



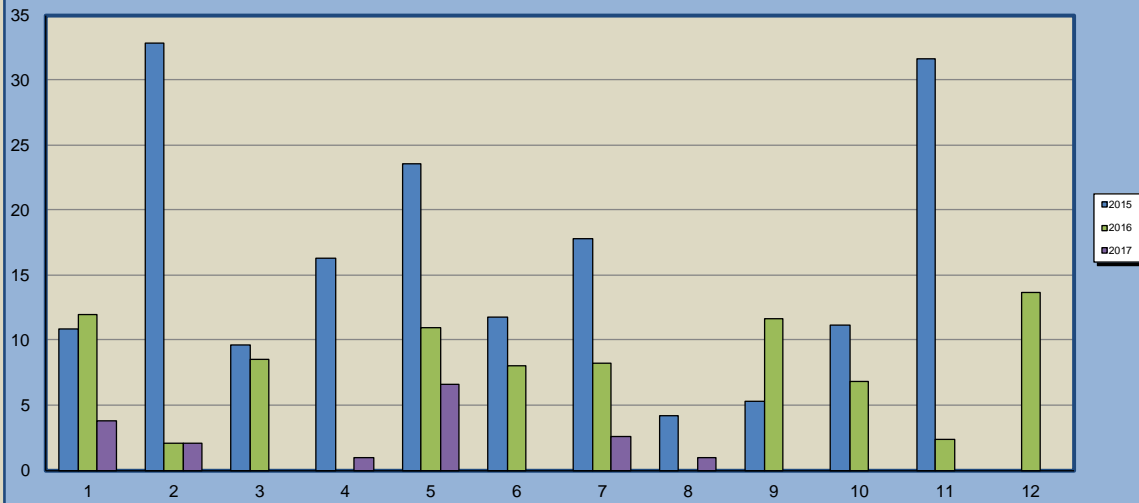
Guineafowl Occupancy (nights per month)



No. of job cards opened (per month)



Generator Hours (per month)



Ground Water Extraction m<sup>3</sup>  
(combined boreholes per month)

