



## RESERVE REPORT

June 2017

### Introduction



White-headed Vulture

The White-headed Vulture (*Aegypius occipitalis*) is one of five species of vultures that can be seen at Ingwelala. Of huge concern is the steady decline of population numbers for the White-headed Vulture.

Up until 2004 the IUCN Red List of Endangered Species categorised the White-headed Vulture as “Least Concern”, by 2007 it was reclassified as “Vulnerable” and in 2015 it was listed as “Critically Endangered”. Despite a wide sub-Saharan range, populations have declined dramatically with an estimate of only 5500 birds left. In several areas of its known range local extinction has occurred. Declining numbers are due to habitat degradation and mass poisoning of carcasses that vultures feed on.

White-headed Vultures are classed as medium sized vultures, the wingspan is an impressive 2 – 2.3 metres in adult birds. Females are heavier in mass than males, averaging around 4.7 kilogrammes. In identification, the White-headed Vulture may be confused with the larger Lappet-faced Vulture. The pink to orange beak and pinkish feet are distinguishing features to look out for.

These vultures nest in trees, preferring baobabs and thorn trees. They are monogamous breeders. In southern Africa breeding occurs in winter when a single egg is laid. Incubation is usually 55 days and fledging is around 115 days.

Diet is any meat sourced from either scavenging, stealing or killing. Stranded fish are also consumed.

Facts found on the Internet. Words by John Llewellyn. Picture courtesy of Charlie Lynam.

### **Out and About:**



This elephant cow (above) is part of a breeding herd that ranges between the Kruger National Park and the Private Nature Reserves. During autumn and winter the herd is seen in the Umbabat. The injury was first noted about six years ago. Thank you to Maureen Kirk for this recent picture confirming that all is well and that the cow has a new calf.

### **Staff profile (Meet the team):**



Nelson Khoza, I am sure you agree needs no introduction! Nelson joined the Ingwelala Workshop team on 29 April 1996 and currently fills the role of Workshop Foreman. He is the most wanted man when aging game viewers require mechanical attention and TLC.

Born in the nearby Acornhoek, Nelson grew up in a family of eight, both his parents have since passed away, survived by himself, his two brothers and three sisters. Nelson's younger brother, Timothy, is also employed by Ingwelala in the Conservation Section where he assists Moses at the swimming pool and general grounds.

Nelson is married to Joyce, who have two sons, two daughters, a grandson and a granddaughter. Their oldest son, Surprise, studied Engineering.

On the work front, Nelson informed me he enjoys his job very much, he is grateful to be in a position to assist Members, and enjoys working in a team environment. Nelson believes that if the staff are happy within themselves at work, they will be a productive workforce, and Ingwelala can grow from strength to strength.

I questioned Nelson if there is one aspect that he is especially proud of in the work place? His reply was that he has contributed to improving the overall reliability of the older game viewers.

A leopard is Nelson's favourite animal, because it is beautiful to see, it enjoys its solitude, it avoids human noise and disturbance.

The number 7 is lucky for Nelson, and he is an avid Kaiser Chiefs supporter!

### **Staff complement**

- Reserve Manager (1)
- Conservation Manager and 2iC (1)
- Camp and Systems Manageress (1)
- Front Desk Manageress (1)
- Accounts Manageress (1)
- Workshop Manager (1)
- Maintenance Manager (1)
- Reception and Housekeeping (1)
- Field Assistants (5)
- Grounds staff (2)
- Domestics (14)
- Maintenance Assistants (4)
- Workshop Assistants (4)
- Petrol and Stores Attendant (1)
- Shop assistants (2)
- Sibon (2)

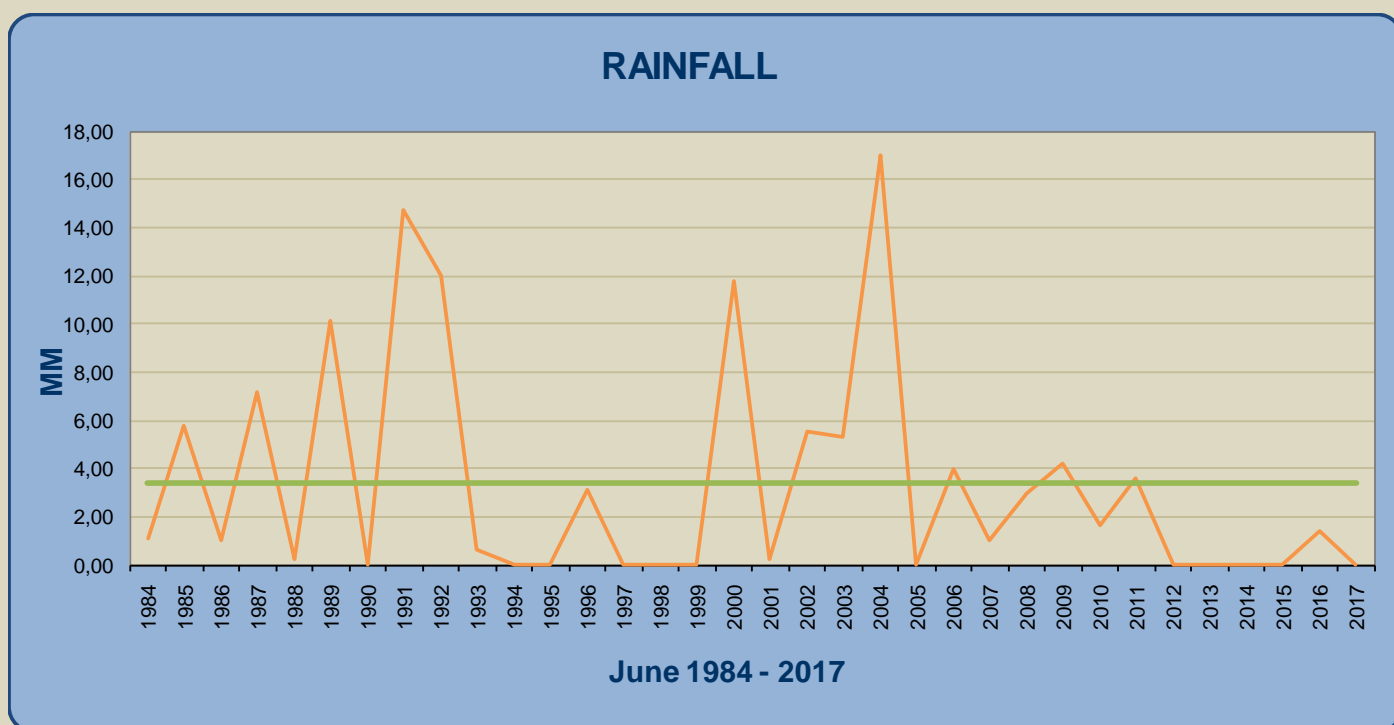
### **Staff Movement**

Nil.

### **Climate and rainfall (summary)**

Rainfall: 0 mm: Season Total = 391.6 mm.  
Minimum temperature: 07 degrees Celsius.  
Maximum temperature: 32 degrees Celsius.

The following graph summarises total rainfall recorded at Ingwelala for the month of June over the past 33 years.



(Note: June 2017: 0 mm rainfall is less than monthly average of 3.4 mm)



## **Bungalows for sale**

Bungalow # 18, a full (100%) share of seven shares for R4.90 million.

Bungalow # 97, a full (100%) share of seven shares for R5.90 million.

## **Conservation**

### **Alien plant eradication**

Conservation staff treated (folio spray) X6 Opuntia (prickly pear) with herbicide in Camp.

### **Veld Rehabilitation**

Nil.

### **Erosion Control**

Nil.

### **Roads and Tracks**

Conservation staff spent considerable time clearing trees and shrubs off roads left behind by elephants.

### **Airstrip**

The airstrip surface is inspected on a weekly basis and the general condition recorded in a register.

A reminder please that all airstrip users must complete (once off) an ***Ingwelala Airstrip Indemnity Form*** before landing. Indemnity forms are obtainable from [reception@ingwelala.co.za](mailto:reception@ingwelala.co.za) Guest pilots must also complete the form before using the airstrip.

### **Fencing**

All the electric fences are working within the APNR Protocol and Norms and Standards.

There were X24 breaches by elephants to the Camp fence, most of breaches made by one bull that has been identified. Fence repairs and general maintenance consumed most of the conservation staff time.

### **Bomas, Hides and Picnic Sites**

These facilities are checked daily.

A new rustic picnic spot was created on Argyle, off Slaughter Loop. One of objectives of new picnic site is to spread game viewers across the property and utilise areas not always regularly frequented by members.



## **Game sightings**

Big Five sightings through the month of June were abundant for elephant, leopard and lion. There were several lion kills, one great sighting was lions wounding a buffalo (and losing interest), and chose to kill another buffalo instead, which allowed a large clan of hyenas to immediately move in and kill the wounded buffalo! The wonders of the bush are truly amazing to witness. On another occasion, the lions spent an entire night chilling around the swimming pool grounds, investigating and sniffing at the human scents left on garden benches and chairs. Two young cubs present seem to enjoy a run on the lawn, using the garden furniture as useful screens from which to ambush one another in play. The elephant bulls that visit Camp have also shown an interest in all the new plants and shrubs around the Members Area, and “touch wood,” have not inflicted too much damage during these escapades. A Member collecting a cell phone on charge after dark from the TV lounge had to prolong the collection time as a leopard crossed the gazebo/patio area between all the tables and chairs!

General sightings included giraffe, blue wildebeest, zebra, impala, kudu, nyala, lesser bush baby, genet, civet, warthog, hippo, crocodile and side-striped jackal.

Birds listed were Fish Eagle, Verreaux’s Eagle-Owl, Ground Hornbill, Temminck’s Courser, Brown-headed Parrot and Cut-throat Finch.



Picture courtesy of Charlie Lynam

## **Security**

No incidents on Ingwelala during the reporting period.

## **Road Kills**

Nil.

## **General Fire Risk Management**

Veld fire and general fire risk is currently very high due to the dry winter conditions.

Fire-fighting equipment is checked on a weekly basis.

X 2 tractors available to assist with fire-fighting (x2 water drawn carts).

X 1 “Bakkie-Sakkie” serviceable and responsive on a “first call” basis.

X 20 fire beaters and x4 knap-sack sprays in good working order.

## Umbabat

The perimeter firebreak with KNP is 40% complete (grading).

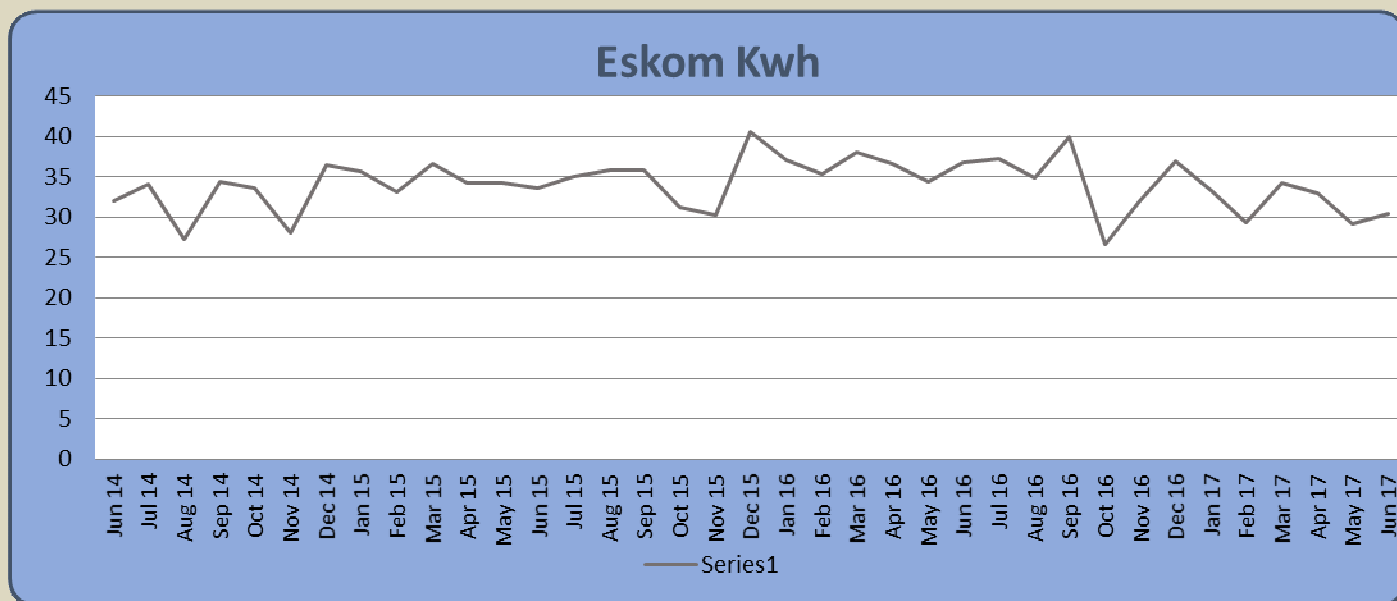
## Water reticulation

Yield data for the boreholes is reflected in the following table, comparative with previous months.

BOREHOLE	JUN 17	MAY 17	APR 17	MAR 17	FEB 17	JAN 17	DEC 16	NOV 16	OCT 16	SEP 16	AUG 16
BH NO 1	34	298	188	87	97	1095	175	53	106	283	153
BH NO 2	1043	1000	1141	1005	669	949	883	814	642	921	590
BH NO 3	151	557	681	342	683	193	320	473	518	834	575
BH NO 4	181	483	425	322	753	812	884	911	894	855	832
BH NO 5	238	467	445	353	245	345	392	470	446	473	462
BH NO 6	367	675	622	683	107	650	690	394	586	593	709
BH NO 7	0	0	0	0	2	288	207	455	565	425	232
BH NO 9	Solar	Solar	Solar	Solar	Solar	Solar	Solar	Solar	Solar	Solar	Solar
JB	491	278	43	0	0	0	0	0	0	111	329
GOEDEHOOP	1312	1395	780	0	0	0	507	870	762	753	1018

## Eskom Usage

The following graph shows the monthly Eskom Usage (Kwh) for Ingwelala.



## Vehicles and Workshop

WORKSHOP	JUN 17	MAY 17	APR 17	MAR 17	FEB 17	JAN 17	DEC 16	NOV 16	OCT 16	SEP 16
JOB CARDS OPENED	48	67	46	55	38	37	53	39	43	51
JOB CARDS CLOSED	58	63	57	56	30	19	56	42	45	49
GENERATOR HOURS	0	6.6	10.9	0	2.1	3.8	13.7	2.4	6.8	11.7
DIESEL TANK (L)	575	575	650	850	850	100	205	425	475	550

The general fleet and static plant maintenance is 100% compliant with the servicing schedule.

Toyota Dyna (C2) was replaced with a 4-ton Tata drop side truck.

Water Hilux (C1) was replaced with the Workshop Mahindra and a Nissan 4x4 single cab LDV was purchased for the Workshop.

### **Building project**

Current (major) building projects are listed below:

Bung No	Name	Work requested	Approval	Builder	% Complete
44	Cecil Bodenstein	New patio & gazebo & internal upgrades	June 2017	Owner builder	0%
115	Phil Raymond	Internal modifications	November 2016	Dukes Construction	20%
116	Geoff Watson	Demolish and rebuild	February 2017	Chameleon	25%
124	Wayne van Rensburg	Rethatch	May 2017	Dukes Construction	30%
173	Theo van der Handel	Rethatch & internal upgrades	April 2017	Chameleon	60%
185	Weston Dickson	Demolish and rebuild	Approved January 2017	Chameleon	10%
186	John Hawkins	New gazebo and raise patio	Approved July 2016	Dukes Construction	80%

### **Reception Statistics**

GATE STATISTICS	JUN 17	MAY 17	APR 17	MAR 17	FEB 17	JAN 17	DEC 16	NOV 16	OCT 16	SEP 16
VEHICLES	251	162	397	245	145	179	458	185	218	256
MEMBERS GUESTS	818	465	1328	798	437	481	1341	614	609	689
UNACCOMP GUESTS	3	0	34	0	8	0	0	2	0	3
UNITS OCCUPIED	150	114	222	140	91	159	213	113	138	143
AIRBORNE VISITORS	16	2	17	3	7	8	2	7	11	8

COTTAGE NIGHTS	JUN 17	MAY 17	APR 17	MAR 17	FEB 17	JAN 17	DEC 16	NOV 16	OCT 16	SEP 16
HORNBILL	12	7	28	20	20	13	18	12	9	3
FRANCOLIN	17	0	19	13	10	8	18	9	8	10
GUINEAFOWL	12	6	17	4	9	11	7*	0	3	5

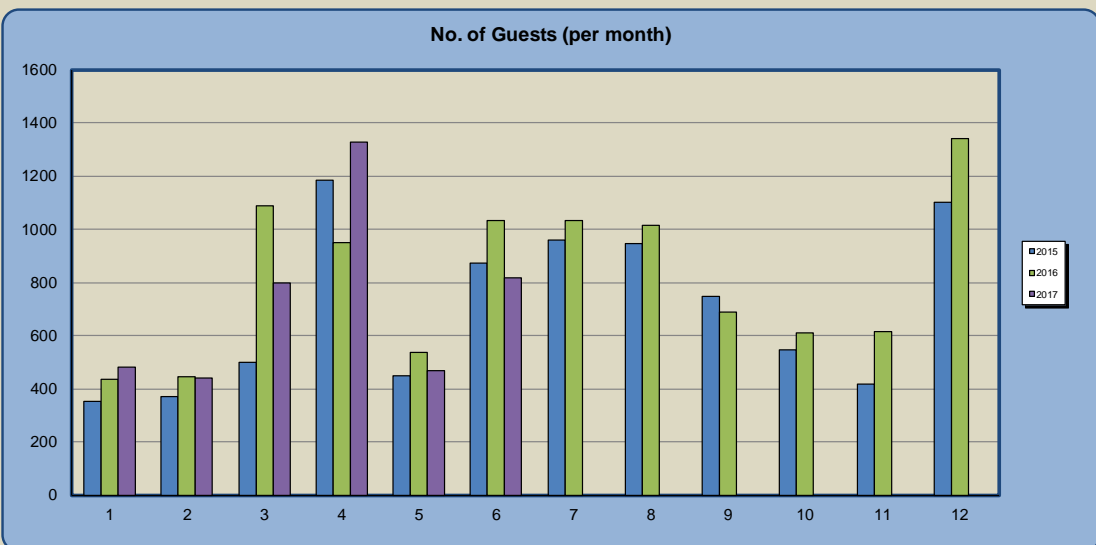
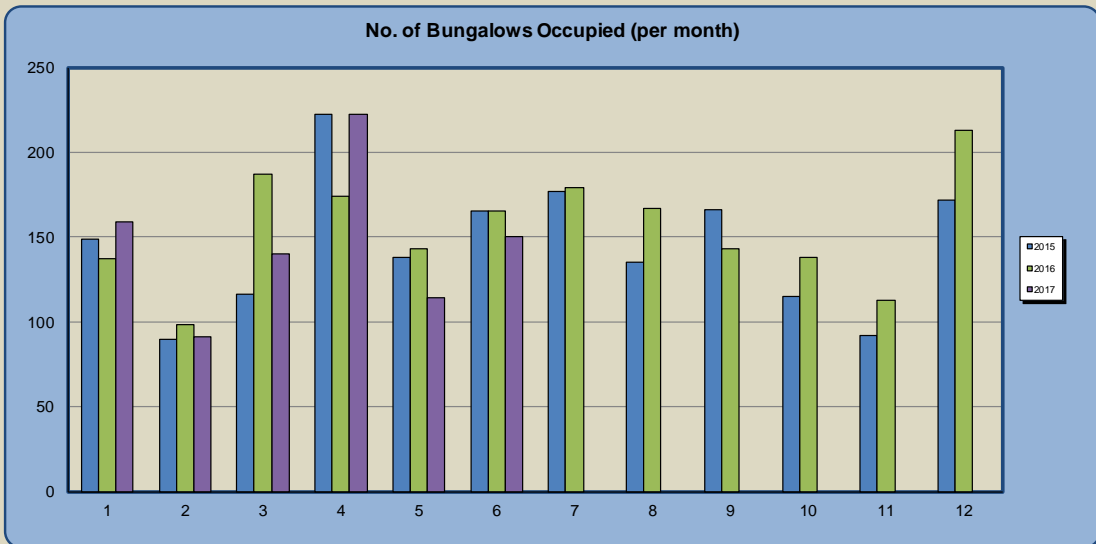
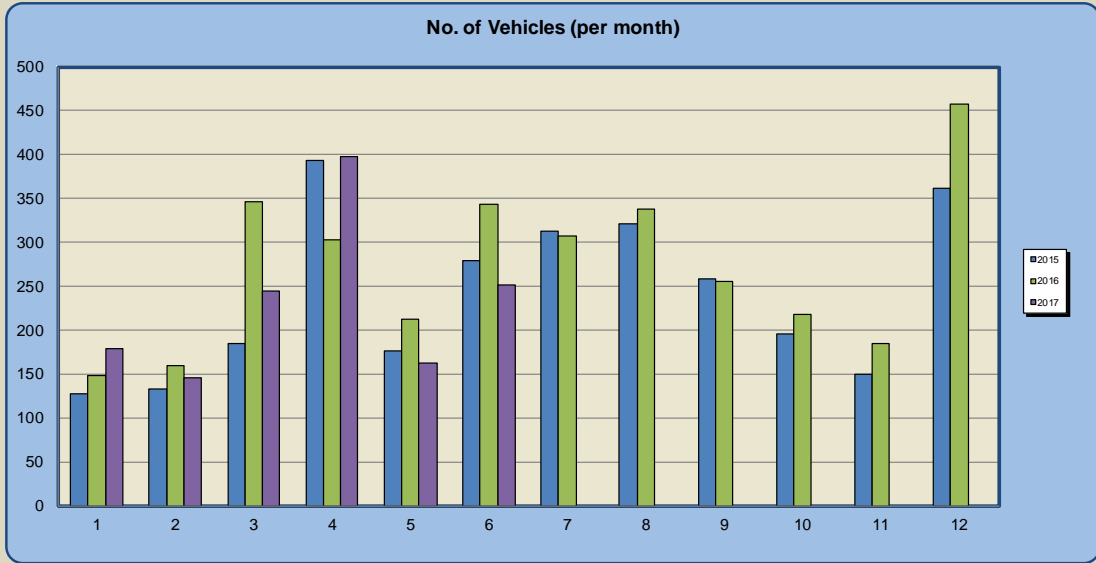
General:

1. Our deepest condolences are expressed to the Robinson family in Bungalow # 209 over the recent passing away of a family member.

Thank you for your continued support.

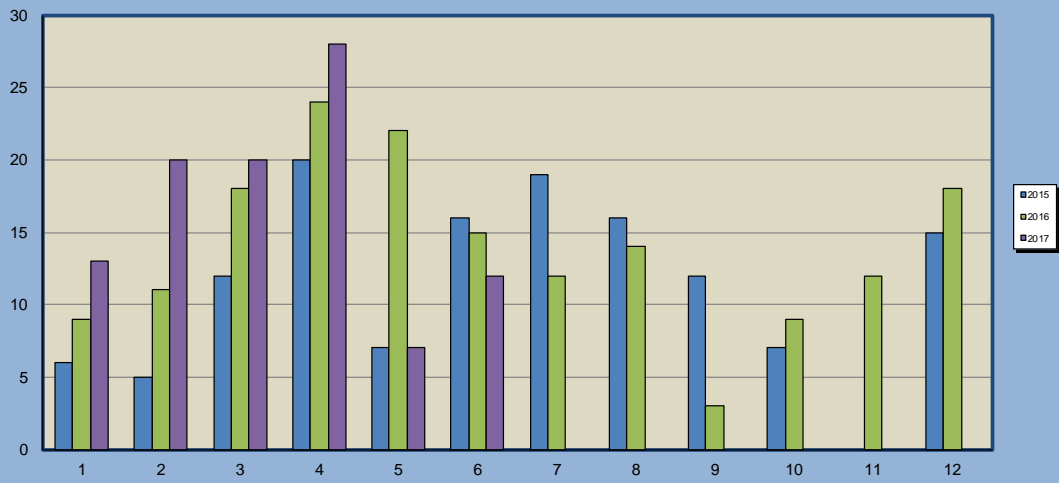
**John Llewellyn**  
Reserve Manager

## ANNEXURE 1: GRAPHS

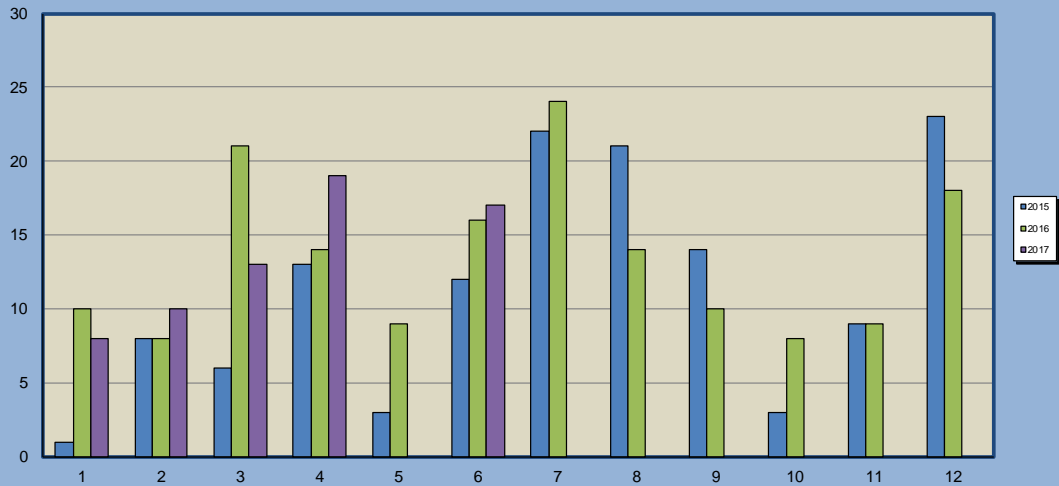




Hornbill Occupancy (nights per month)



Francolin Occupancy (nights per month)



Guineafowl Occupancy (nights per month)

